



January 14-30, 2022

713 Lake Avenue, Lake Worth Beach
www.lakeworthplayhouse.org | 561.586.6410



**MARCH 25 -
APRIL 10,**





CHEF DRIVEN CLASSIC FOOD YOU LOVE.



City Oyster
& SUSHI BAR

ATLANTIC AVE • DELRAY BEACH

GREASE
BURGERS • BEER • WHISKEY BAR

CLEMATIS ST • WPB

ELISABETTA'S
RISTORANTE • BAR • PIZZERIA

DELRAY BEACH

Big City
TAVERN

LAS OLAS BLVD • FT LAUDERDALE

Rocco's Tacos
AND TEQUILA BAR

WPB • BOCA • PB GARDENS • TAMPA • DELRAY BEACH
FT. LAUDERDALE • ORLANDO • BROOKLYN • NAPLES

LOUIE BOSSI'S
RISTORANTE • BAR • PIZZERIA

BOCA RATON • FT LAUDERDALE

BARRIO
—SANGRIA BAR—

ROSEMARY SQUARE • WPB

CITY CELLAR
WINE BAR & GRILL

ROSEMARY SQUARE • WPB

A Message From The Executive Director



Welcome to the Playhouse!

On behalf of the Board and Staff of the Playhouse, I would like to extend a warm and heartfelt Thank you. We are humbled by the support you have shown during these past months. We remain committed to bringing you live quality theatrical entertainment.

There are so many ways to contribute to the Playhouse. Volunteering is a great way to be a part. Ushering, helping backstage, costumes, props, and all kinds of other things. Not only does that help us further our mission, but you will be a part of something special with each new show. No special skills needed at all... I promise. Just a kind attitude.

As a registered 501C3 non-profit, all donations are tax deductible to the fullest extent allowed by law. Your contributions go towards so many things including:

- Costumes, microphones, and lumber to build the sets and many more.
- Teaching instructors for kids and adults acting classes, hip hop, musical theatre classes
- Our outreach program in which we go into the schools and introduce kids to theatre arts.
- Royalties for musicals, plays and independent films

There are so many ways to make a difference. The fact that you are sitting in your seat right now is helping us further our mission to provide entertainment, education and opportunities for artistic expression through volunteerism, community involvement and support.

We appreciate your patronage. We value you support.

Kind regards and enjoy the show!

A handwritten signature in dark ink that reads "Stephanie Smith". The signature is fluid and cursive.

Stephanie Smith
Executive Director

The Lake Worth Playhouse is a federally registered
501(c)3 non-profit organization (Tax ID# 59-6138280).



9 to 5

Music and Lyrics by DOLLY PARTON

Book by PATRICA RESNICK

Orchestration by BRUCE COUGHLIN

*Arrangements and Additional Orchestrations by
STEPHEN OREMUS and ALEX LACAMOIRE*

Director

CATHY RANDAZZO-OLSEN

Musical Director
ED KOLCZ

Stage Manager
MAYA SUCHY

Choreographer
KASSIE MEILER

Production Stage Manager
ELIZABETH ROBINSON

Set/Lighting Designer
ARDEAN LANDHUIS

Technical Director
JAMES R. CARTEE

Costume Designer
MAYA SUCHY

Prop Master
PHYLLIS A. CAFARELLI

9 TO 5, THE MUSICAL is presented through special arrangement with Music Theatre International (MTI). All authorized performance materials are also supplied by MTI.

www.mtishows.com

Any video and/or audio recording of this production is strictly prohibited

A Message From the Artistic Director



Thank you all for attending and for your support of the Playhouse.

9 to 5 is the halfway point of our season and we still have some great shows for you all. Kudos to our incredible cast, crew and production team for putting together a fantastic show. Special thanks to Director Cathy Randazzo-Olsen, Choreographer Kassie Meiler and Music Director Ed Kolcz for their passion, vision and leadership throughout the whole rehearsal process.

You can view our remaining 2021-22 line-up for the season inside of this playbill. Subscriptions are now available for our season shows and purchasing a full or partial subscription is a great way to support the Playhouse.

Our 2021-22 Black Box Season is also at the half-way point and features thought provoking subjects, stories and themes that are relevant to our current times. All works selected and presented in the series make perfect use of the Playhouse's Stonzek Studio Theater, an intimate setting which provides the audience with a personal and visceral theatre going experience.

Thank you all again for your patronage and support and please enjoy 9 to 5 The Musical. I hope to see you all again as we present the much beloved and known Wizard Of Oz this spring.

Enjoy the show!

Best Wishes,
Daniel Eilola

A handwritten signature of Daniel Eilola in cursive script.

Artistic Director
Lake Worth Playhouse

Cast & Crew

CAST:

VIOLET NEWSTEAD	DIANE TYMINSKI
DORALEE RHODES	MARCI ROBIN
JUDY BERNLY	MEGAN CIRES
FRANKLIN HART	JIM TYMINSKI
ROZ KEITH	LENORE GOLDFEDER
JOE	RYAN STENDER
DWAYNE RHODES	CHRIS OMBRES
JOSH NEWSTEAD	SETH SUCHY
MISSY HART	KENDALL JACKSON
MARIA DELGADO	MONICA RAE
DICK BERNLY	JUSTIN ROLAND-BRAMKAMP
KATHY	ELIZABETH D'AMICO
BOB ENRIGHT	JY'IREZE BELL-BENNETT
RUSSELL TINSWORTHY	CARL VANDYKE
MARGARET	JOYCE RASMUSSEN
ENSEMBLE	JENNA-BROOKE BELLINATO
ENSEMBLE	ISABELLA SHELLBECK
ENSEMBLE	SABRINA TORRES
ENSEMBLE	VICTORIA JOHNSON

CREW:

DIRECTOR	CATHY RANDAZZO-OLSEN
MUSICAL DIRECTOR	ED KOLCZ
CHOREOGRAPHER	KASSIE MEILER
SET & LIGHTING DESIGNER	ARDEAN LANDHUIS
PRODUCTION STAGE MANAGER	ELIZABETH ROBINSON
STAGE MANAGER	MAYA SUCHY
COSTUME DESIGNER	MAYA SUCHY
PROPS	PHYLLIS A. CAFARELLI
COSTUME	JILL WILLIAMS
LIGHT BOARD OPERATOR	J.B. WING
SOUND BOARD OPERATOR	JAMES CARTEE
TECHNICAL DIRECTOR	JAMES CARTEE
BACKSTAGE CREW	MATTHEW MICHAELS, NANCY PUGLIESE, JILL WILLIAMS ANDREW HOPTA, SAMUEL JONES, DIANE BACON MILES, TRACY CARTER



Special Thanks to Amanda Roy, Bad Hair Day
Photography, for photographing the show.

Under the Playhouse Lights



Diane Tyminski (Violet Newstead) debuted at the LWP in 2011 in *Shout* and has been gratefully performing locally ever since. Her favorite roles include: *Legally Blonde* (Paulette), *I DO I DO* (Agnes), *They're Playing Our Song* (Sonia), and *Next to Normal* (Diana Goodman). Much love and gratitude to the cast, crew, and Murf! xo



Marci Robin (Doralee Rhodes) is honored to perform in her fourth production at Lake Worth Playhouse, where she previously appeared in *Annie* (Miss Hannigan), *Gypsy* (Mazeppa), and *We Will Rock You* (Ensemble). By day, she's a contributing editor at *Allure* and writes for *InStyle*, *Martha Stewart*, and other publications. She's grateful to the cast, crew, LWP staff, and, most of all, her fiancé, Dwayne — er... Chris.



Megan Cires (Judy Bernly) is thrilled to perform in her 7th show at LWP. Fun fact! The first show Megan auditioned for was *9 to 5* with Tampa's MAS Theatre five years ago where she played Missy/Ensemble. She is so grateful to take on a bucket-list role of Judy in this full-circle moment. In January 2020, she performed as a chorister in Palm Beach Opera's *Turandot*. Megan spends her time off-stage as a veterinarian.



Jim Tyminski (Franklin Hart) (originally from Levittown, NY) is thrilled to be returning to The Lake Worth Playhouse. He has appeared in many theater productions in South Florida, most recently including "SEE HOW THEY RUN", "THE WORLD GOES ROUND", "I DO! I DO!", "THE SENSUOUS SENATOR", "THE ADDAMS FAMILY", and "THEY'RE PLAYING OUR SONG." He has also appeared on TV in Season 3 of *The Walking Dead* as a zombie! When not performing on stage, Jim works as a software developer, but please don't ask him to fix your computer. Many thanks to folks at the playhouse for making this production a gratifying and wonderful experience. Hope you enjoy the show as much as we love performing it. MURP!



Lenore Goldfeder (Roz Keith): In her 23rd year of theatre, Lenore is excited to return to LWP, last seen as *Helga Deathtrap*, *Janet Witness For The Prosecution*, *Sister Mary Theresa* *Sister Act*. Lenore sings with "Magic Moments DooWop" and is blessed with her children, family & friends. She dedicates all performances to the cast/crew, Sebastian, Cordelia, and her late parents.



Ryan Stender (Joe) is excited to make his debut at the Lake Worth Playhouse. He is grateful to his family (especially his monkey and fishy) for their love and support and thanks all those involved in 9 to 5 for making his return to the stage a rewarding experience.



Chris Ombres (Dwayne Rhodes) is very happy to be in his fifth production at the Lake Worth Playhouse. Previously, he played the roles of Galileo in *We Will Rock You*, Rooster in *Annie*, Yonkers in *Gypsy*, and Lyle in *Footloose*. Chris is so proud of his fiancée, Marci, who is playing Doralee, and he thanks LWPH for bringing them together.



Seth Suchy (Josh Newstead) is very excited to be part of the 9to5 cast. His credits include *Jungle Book* (Baloo), *Narnia* (Father Christmas), *Footloose* (Willard), and *Peter Pan* (Smee). Seth would like to give special thanks to the cast, crew, marvelous director, stage manager, and his family.



Kendall Jackson (Missy Hart) is THRILLED to be back at the LWPH once again! Some of her favorite credits include *Charity* (Sweet Charity), *Eva Peron* (Evita), and *Rose Alvarez* (Bye Bye Birdie). Kendall would like to thank her friends and family for their constant support and the LWPH for this opportunity!



Monica Rae (Maria Delgado): Hailing from San Francisco, Monica Rae brings a lifetime of musicality to South Florida. She began singing at three years old, and by twelve was touring internationally with a professional choir. Her work life is at The Bohém Salon, and her off time is spent renovating her home with her fiancé Jaimie.



Justin Roland-Bramkamp (Dick Bernly) is excited to be on the stage of Lake Worth Playhouse again. He recently discovered a passion for performing live theatre. This is his third show this season at Lake Worth Playhouse, and his third show ever! The love and encouragement from his husband, Josh, has helped him find and develop this new passion.

Under the Playhouse Lights



Elizabeth D'Amico (Kathy) is so grateful to be back on the Lake Worth Playhouse stage! Recent credits include *We Will Rock You*, *Hedwig and the Angry Inch*, *Next to Normal*, and *Annie*. Elizabeth would like to thank the talented cast, crew, and Playhouse staff for an amazing experience!



Jy'ireze Bell-Bennett (Bob Enright) is so exciting to be playing the role of Bob Enright and to be a part of the Lakeworth Playhouse Family. Jy'ireze is a freshman at Palm Beach Atlantic University studying musical theatre. Previous theatre credits include *Les Miserables*: High school edition (The Bishop), *Mamma Mia* (ensemble), *Newsies* (Spot Conlon), *Mary Poppins* (George Banks), and many more. Jy'ireze would like to thank his family, friends, production team, and God for their continued love and support. Enjoy the show!



Carl VanDyke (Russell Tinsworthy): This is Carl's fifth production at The Lake Worth Playhouse. He first auditioned in 1978 and tried again in 2016. He would like to thank the audience for their continued support which makes live theatre possible in South Florida.



Joyce Rasmussen (Margaret) is sooooo glad to be back on stage at the Lake Worth Theater once again. After a 25 year absence she feels as if she's come home. This cast is so talented, and so much fun to work with. I want to thank everyone who had enough faith in me to give me this opportunity. To all involved have fun and break a leg!!!



Jenna-Brooke Bellinato (Ensemble): 'JB' is very honored to be a part of the 9 to 5 cast. Jenna-Brooke has done things from performing and assistant music directing to stage crew and spotlight. JB would like to thank the amazing 9 to 5 cast & crew, her mother, her girlfriend, and all her friends and family.



Isabella Shellbeck (Ensemble) is thrilled to be performing in her first show at the Lake Worth Playhouse. She was last seen in *Legally Blonde* at The Barn Theater and *Grease* as Patty Simcox, at Indian River State College. Isabella would like to thank her family and friends for all their love and support.



Sabrina Torres (Ensemble) is ecstatic to be in the ensemble in the Lake Worth Playhouse production of 9-5. She has been seen in other productions such as Dolly in Hello Dolly, Tzeitel in Fiddler on the Roof, Scout in To Kill a Mockingbird, Juror 12 in 12 Angry Jurors, and Carrie in Carousel. She would like to thank her friends and family for always supporting her. She would also like to thank the wonderful stage manager, choreographer, and director without whom none of this would be possible.



Victoria Johnson (Ensemble) a 14-year-old singer, actress, and dancer re-joins the Lake Worth Playhouse where she starred as Annie last season. She works nationally, regionally, and locally in theater, movies, television, singing competitions, and performances with the NFL, MLB, and others. She has released 4 original songs, with 6 more available shortly. Follow her on Instagram @VictoriaJohnsonMusic or www.VictoriaJohnsonMusic.com. Victoria loves her family and friends and thanks to Lake Worth Playhouse for these great opportunities and everyone for their support.

Behind the Playhouse Curtains



Cathy Randazzo-Olsen (Director) is currently the Director of Education and Community Outreach Coordinator at the Lake Worth Playhouse. She's directed, musical directed, and choreographed for the last 15 years. She attended the University of Central Florida in Orlando with a major in BA Theatre Studies. Directing Credits include How to Succeed in Business, Aladdin Jr, Shrek, Into the Woods Jr, Seussical Jr, Les Miserable, In the Heights, SpongeBob the Musical, and Annie. Acting credits include The Drowsy Chaperone, Urinetown the Musical, The Wizard of Oz, Nine the Musical, Minnie's Boys, Sister Act, and Legally Blonde. Huge thanks to her loving husband Bobby and her family for the support and love!



Elizabeth Robinson (Production Stage Manager) is a recent graduate from the University of Tampa and is thrilled to join the stage managing team after performing on the Playhouse stage since she was 15. Previous credits include Sondheim on Sondheim (Barbra Cook), Concept of Specificity (Chelsea), and Guys and Dolls (Agatha). Love to all! Hi, Mom and Dad!



Ed Kolcz (Musical Director): A Florida resident since 1975, Ed has been a Music Director and Pit Musician for numerous professional, community, and school theatre programs throughout S. Florida including the award-sweeping production of Young Frankenstein here at the Lake Worth Playhouse. Ed is also an accomplished accompanist/coach, church organist/choir director for over 30 years, and the keyboardist/band manager of his wedding/corporate band "Groove Line". As a former I.T. specialist and due to the pandemic, Ed has also gained numerous skills in live-streaming theatre productions using a variety of computer software. Ed is honored, grateful, and thrilled to be working with the talented cast and crew of We Will Rock You and looks forward to many more at his favorite theatre....the Lake Worth Playhouse.



Kassie Meiler (Choreographer) is delighted to be back at the playhouse and has choreographed over 50 musicals, including Annie, Footloose, Flashdance, and Bye Bye Birdie at LWPH. She's earned a BA in Theatre (FSU) & MA in Mass Communications (UF). When she's not teaching dance or choreographing, she runs her business, GOAT Social Media.



A BLACK BOX SERIES
THEATRE PRODUCTION



FEB. 4-13, 2022

Winner of a 2009 Tony Award.

A playground altercation between eleven-year-old boys brings together two sets of Brooklyn parents for a meeting to resolve the matter. At first, diplomatic niceties are observed, but as the meeting progresses, and the rum flows, tensions emerge and the gloves come off, leaving the couples with more than just their liberal principles in tatters.



TRUE WEST Sam Shepard

APR. 22-MAY 1, 2022

This American classic explores alternatives that might spring from the demented terrain of the California landscape. Sons of a desert-dwelling alcoholic and a suburban wanderer clash over a film script. Austin, the achiever, is working on a script he has sold to producer Sal Kimmer when Lee, a demented petty thief, drops in. He pitches his own idea for a movie to Kimmer, who then wants Austin to junk his bleak, modern love story and write Lee's trashy Western tale.

Stonzek Studio

at Lake Worth Playhouse

713 LAKE AVE., LAKE WORTH BEACH, FL 33460 | 561-586-6410
www.lakeworthplayhouse.org/bbscurrent

21/22 SEASON



OUR 69TH SEASON



FEB. 18 - MAR. 6

As news spreads of a murder in London, a group of seven strangers find themselves snowed in at a state-ly countryside guesthouse. When a police sergeant arrives, the guests discover – to their horror – that a killer is in their midst! Which one is the murderer? Who will be their next victim? Can you solve the mystery before another “mouse” goes SNAP?



MAR. 25 - APR 10

Follow the yellow brick road in this delightful stage adaptation of L. Frank Baum's beloved tale, featuring the iconic musical score from the MGM film. The timeless tale, in which young Dorothy Gale travels from Kansas over the rainbow to the magical Land of Oz, continues to thrill audiences worldwide.

713 Lake Ave. Lake Worth Beach, FL.
561.586.6410 | lakeworthplayhouse.org





Sinatra! ~ The Musical

'It Was A Very Good Year!'

A MULTIMEDIA TRIBUTE TO
Frank Sinatra

Tony Sands



March 2, 2022



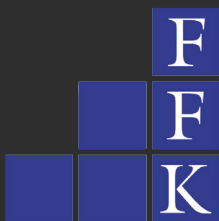
March 22, 2022

PROUD SPONSOR OF THE LAKE WORTH PLAYHOUSE
2019-2020 SEASON



THE GREATEST HITS OF THE
70'S, 80'S, & 90'S

WWW.SUNNY1079.COM



FRIEDMAN, FELDMESSER & KARPELES CPA LLC
SERVING PALM BEACH COUNTY FOR OVER 20 YEARS

- Individual & Business Tax Return & Preparation
- Tax Planning, Consulting, and Representation
 - Accounting and Bookkeeping Services
 - Audits, Reviews and Compilations

KENNETH R. FRIEDMAN, CPA | 561.622.9990 | KENF@FFKCPA.COM
641 UNIVERSITY BOULEVARD, SUITE 210, JUPITER
WWW.FFKCPA.COM



THE AGATHA CHRISTIE'S MOUSETRAP

**February 18 - March 6,
2022**

713 Lake Avenue, Lake Worth Beach
www.lakeworthplayhouse.org | 561.586.6410



YOUR AD HERE

Contact Justin Hair at 561-586-6169 x216

Retired & Looking for Meaningful Part-Time Work?

Do good and make money®

If you want to...

Stay Active • Work Flexible Hours
Support Your Lifestyle with a Little Extra Money
• Help Seniors in our Community

And you are...

Patient • Empathetic • Reliable • Professional



Then consider becoming an in-home caregiver!



Seniors Helping Seniors®
...A WAY TO GIVE AND TO RECEIVE®

Contact us at

561.572.9737

Johnimp@https://SHSDelrayBoynton.com/
https://SHSDelrayBoynton.com/

©2019 Johnimp is independently owned and operated. Contact: 800.273.0816

VOLUNTEERS ARE ALWAYS NEEDED

*Complete your community service
hours here at the playhouse*

- Backstage-
- Lighting-
- Sound-
- Ushers-

713 Lake Ave. Lake Worth Beach, FL.
561.586.6410 | lakeworthplayhouse.org



EFFECTIVE LEGAL REPRESENTATION

ANTHONY J. ARAGONA III, P.A.

Serving all of South Florida since 1994

- ✓ Civil Litigation
- ✓ Foreclosure Defense
- ✓ Bankruptcy

FREE CONSULTATION

Lake Worth, Florida

Tel: (561) 649-1790

Fax: (561) 649-6767

www.anthon yaragona.com

Legal Counsel for the Lake Worth Playhouse



LAKE WORTH'S FAVORITE GATHERING SPOT

*(But don't tell anyone...
the locals might get mad)*

- DAILY SPECIALS
- OPEN AIR DINING

632 LAKE AVENUE
LAKE WORTH
588-5208



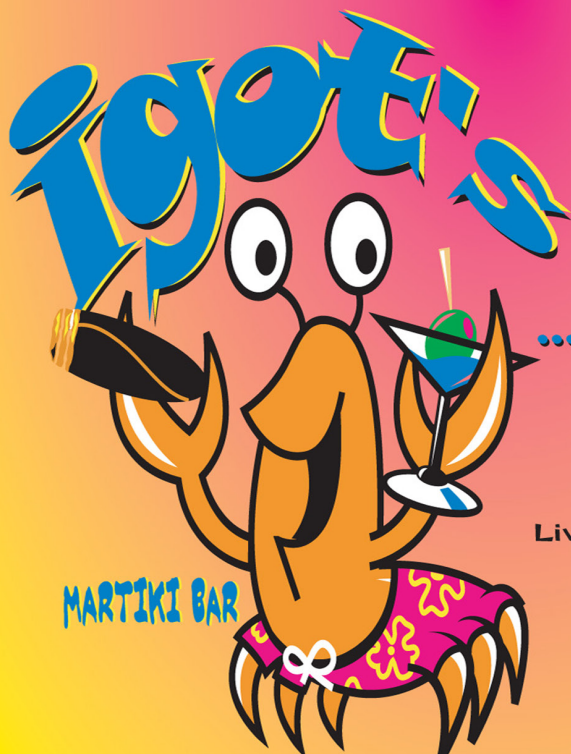
EST. 1999

CRABS
CLAMS
OYSTERS

FRESH FISH • PRIME RIB
BABY BACK RIBS

Corner of Lake Ave and K Street

JOIN US
BEFORE OR
AFTER THE SHOW



...TO HAVE A DRINK

LOCATED NEXT DOOR
TO DAVE'S

Live Entertainment Thur - Sun

702 LAKE AVENUE
LAKE WORTH
582-IGOT

www.daveslastresort.com



Welcome to the Lake Worth Playhouse!

Dear Valued Patron:

The Board of Directors, staff and dedicated volunteers of the Lake Worth Playhouse would like to express how excited we are to present to you our 69th season of live theatre!

We here at the Playhouse strive to remain the best community theatre in all of South Florida. In order to maintain our commitment to excellence, we are always striving to improve the quality of our productions for your enjoyment. We have made a personal commitment to the raising of funds to upgrade our sound and lighting equipment.

We now ask for your support to help us accomplish this goal .

We have created the "Playhouse's 120 Challenge" to encourage 120 patrons to pledge \$120 each. If you are like us, you cannot always write a check or may not have an extra \$120 to give away, so we have set up a sustainer account. If you pledge \$120 we will only bill you \$10 a month on your credit card for the next 12 months. That is the equivalent of a few of cups of specialty coffee or maybe a take-out lunch!

Many patrons have already joined the challenge. Please consider joining them in supporting excellence in the arts by also becoming a "Playhouse's 120 Challenge" member.

Fill out the form below and turn it into the Box Office.

Thank You,

The Lake Worth Playhouse Board of Directors & Executive Staff

FLORIDA DEPARTMENT OF AGRICULTURE & CONSUMER AFFAIRS REGISTRATION # - CH9675
A COPY OF THE OFFICIAL REGISTRATION AND FINANCIAL INFORMATION MAY BE OBTAINED FROM
THE DIVISION OF CONSUMER SERVICES BY CALLING TOLL-FREE (800-435-7352) WITHIN THE STATE.
REGISTRATION DOES NOT IMPLY ENDORSEMENT, APPROVAL, OR RECOMMENDATION BY THE STATE.

THANK YOU FOR YOUR SUPPORT OF LWPH

Yes, I would like to support the Lake Worth Playhouse
with my gift of \$120 for the "Playhouse's 120 Challenge!"

Please print clearly:

Name: _____

Address: _____

City/State/Zip: _____

Phone: _____

☐ Check ☐ Credit Card (one time) ☐ Credit Card (\$10 a month)

Card Number: _____

Security Code _____ Expiration Date: ____/____/____

Legends 100.3FM

Where Legendary Music Lives - **WLML**
Palm Beach County
A Dick Robinson Entertainment Station

legendsradio.com

FRANK SINATRA

MICHAEL BUBLÉ

DEAN MARTIN

DIANA KRALL

VIC DAMONE

ANN HAMPTON CALLAWAY

TONY BENNETT

AND MORE...



Lake Worth Playhouse Donors

20,000+	MaryLou Gray	John Kane	Shirley Zelkind	Elise Levine
Palm Beach County Cultural Council	Anthony Lofaso	Paul Kelnher	Michele & Arnie Garber in memory of Bill Baron	William Levy
Prime Time Palm Beach County	Kendra Scott	Jim Kelly	OTHER	Bernard Liebman
Anonymous	Hillary Longo	Michael Kiel	4SeasonsVegan	Anthony Lofaso
10,000+	John Petronio	Dr. Richard Klein	Stephanie Ader	Antoinetta Lorina
Florida Division of Cultural Affairs	Justine Postal	Ricky Klimas	Doris Adler-Fagin	Laura Lowman
Anonymous	David Fleisher	Joseph Kolb	Madeline Anbinder	Antoinetta Lorina
5,000+	Marie-Christine Leavitt	Irv Kramer	Jeanette Arfola	Gene Makoski
Anonymous	Beatrice Perkins	Collin Labutka	Marcele Bassett	Alice Mann
Anonymous	united way of Palm Beach County Inc	Kathleen E Lacroix	Susan Baucher	Tamar Martens
Anonymous	Richard R. Raphael	Kelly Lawless	Happy Birthday Mary Keymer	Erin Martin
Anonymous	Lois Richman	Rodman Leas	Sarah Becker	Steven Marturano
Anonymous	Lynn Salvo	Kirsten Lee	Behemoth	Jerry Mathew
2,500+	100+	Lauren Lessard	Harland Beispiel	Russell McCrary
Anonymous	Doris Adler-FaginMichael Alsoo	Lauren Levy	Marc Beresin	Michael McKeich
M.A. Knoke	Bonnie Avery	William Levy	Sidney Blattstein	Gene Makoski
1,000+	Gary Aviv	Roberto Lima	Michael Bloeth	Donald Michals
Anonymous	Jane Bachmann	Frederic Llorens	Edward Bonner	John Noles
Roy Cacciaguida	Susan Bauchner	Anthony Lofaso	Michael Breitenbeck	Robert Nichols
In memory of Hal Johnstone	David Bradford	Kenisha Luby	Barry Brimacombe	Bonnie Nierman
John Geberth	Deana Jo Booker	John Malletto	Anita Brown	Megan Pollack
Mary Keymer	The Boston Art Club	Alice Mann	Tyler Cade	Christine Mohanty
Joseph Kolb & Michael Hoagland	Robert Buchere	Ronnie Marcus	Vincent Cerniglia	Catherine Mulcahey
Lake Worth Lions Club	Mathew Fabio Burton	Elaine Marth	Nancy Cohen	Esther Nitto
Dana Fishkin, Jody Sklar and Esther	Ted Brownstein	Joseph Mastrullo	Miriam Cornelius	Roseann Ogonowski
Patric McPoland	Daniel Carballeira	Martha Mayo	Joyce Cornick	Rosalie Oughterson
Stuart Opatowsky	Doris Chafin	Celia McEaney	Linda Cox	John Paul
Michele Kurucz Peel	Jennifer Christiansen	Teresa Miller	Susan Davidson	Adrienne Percival
Richard & Charlene Raphael	Chris Cimorelli	Joel Mirer	Susy Diaz	Anthony Peterson
In Memory of Betty & Charlie Hall	Shauna Coolican	Ken Mosher	Janet D'Amico	Vince Petrovsky
Renaissance Charitable Foundation	Thomas Copeland	Marion Nahmmacher	Gwen D'Amico	Clayton P Phillips
Dawn Silver	Joyce Cornick	Valerie Nemrow	Nancy Dickenson	Megan Pollack
Richard Swick	Vincent Corso	Esther Nitto	John Dilorio	Janet Parnow
Martin & Teresa Weldfeld	Janet D'Amico	Donald Odell	Mary Jean Erario	Elena Postal
Weidemeyer Family Fund	Susan Davidson	Rosalie Oughterson	Mathew Fabio Burton	Larry Preiser
In Honor of: Mimi May & Tom Weidemeyer Jr	Robert Davis	Patricia Owens	William Feldcamp	Patricia Prunier
Patricia Weaver	Susy & Michael Plesco	Mike Perez	Diane Femia	E.R. Randall
Roy Bartolomei & Peter Wronsky	Donna Donelan	Beatrice Perkins	Anita Finley	Beth Ravitz
500+	Larry Dougher	David Perlmutter	M Lynn Fisher	Jose Reinoso
The Allstate Foundation	Dorothy S. Hernandez	Katie Peltrio	Carolynn Flynn	Andrew Richards
Joy Booth	Larry Edwards	Sam Pittaro	Carolyne Foley	Seymore Rifkin
Liz Bradley	Stacey Einhorn	Darla Pollard	Ron Fox	Bonnie Robeson
Phyllis Cafarelli	Marcia Elgin	Chiam Randall	Michael Francis	Nicole Rokos
Sharon DePalma	Mary Jean Erario	Keith Rankin	John Framelli	Paul Rosen
Dr Thomas & Elaine Ermolovich	EW Foundation	Gloria & Al Raya	Madalynn Friedman	Missy Rovinelli
John Geberth	Joan Farrell	Joel Risch	Kathleen Fryer	Joseph Ruggiero
Gary Goldring	Neil Feinstein	Nicole Rokos	Ira Furman	Pamela Saba
Joseph Kolb	William Feldkamp	Paul Rosen	Lisa Gianini	Ruth Sabo
Hillary Longo	Diane Femia	Jane Rothchild	Charles Hamdwerger	Lynn Salvo
Patric McPoland	Celia Fischer	Amanda & David Roy Family	Lucia Hare-Leahy	Marie Sanderson
Palm Beach Pops	Lynn Fisher	Constance Russell	Marci Gorman	Joyce Sasser
Parrot Cove Neighborhood Association	David and Sue Fleisher	Joyce Sasser	Alan Gurvis	Jeanne Shapiro
Peel, Michele Kurucz	Charles Fredrickson	Mitchell Scholar	Gail Hahn	Jon Schmeyer
Michele May	Patricia Flynn	Arlene Schwartz	Charles Hamewarger	Linda Schultz
Caryn Picker	Carolynn Foley	Richard Schwartz	Mary C. Hayes	Samuel Schwab
Raphael, Richard R.	Richard Forbes	Linda Schultz	Jennifer Harrington	Arlene Schwartz
In Memory of Betty & Charlie Hall	Jane Fox	Stuart Scharf	Carol Hershey	Richard Schwartz
Paul Schild	Helen Franke	Ruth Sells	Janice Hobbs	Barry Segal
Richard Swick	Kenneth Friedman	Gail Seitzer	Theresa Hunt	Ruth Sells
G.S. Voss	Daniel Furlo	Alissa Shultz	Mary Hynes	Dale Smith
Patricia Weaver	Ira Furman	Lawrence Siedlik	In Honor of Joseph Beaton	Laura Smith
Thomas Weidemeyer	Marie Gabrielson	David Simson	Judy Intraub	Katie Stein
Roy Bartolomei & Peter Wronsky	Andrea Gershbein	Sara Skillern	Susan Isreal	Susan Storms
250+	Judith Guido	Laura Smith	Kingsley Itseide	Roman Swiercz
Gary Aviv	Stephanie Haber	Peter Spinner	Ellen Joseph	Henny Swinkels
Chef Duncan	Gail Hahn	Sandra Sullivan	Amanda Kahn	Jef Syx
William Feldkamp	Tonya hamm	Paul Anthony Tasca	Michele Kargol	Peni Banister
Ira Furman	Arthur Harris	Sunny Thayer	In memory of Bill Baron	Andrea Thomas
Andrea Goldberg	Lucia Hare-Leahy	Laura Tindall	Seymour Katz	Mary Troiano
May Goodstein	Diana Henry	Brian Tivnan		Teresa Vignau
Greg Harrison	Patricia Highland	Patricia K. Train		G.S. Voss
Barbara Lederberg	Patricia Higgins	Irish weaver		Robert Wohlst
Marie-Christine Leavitt	Tina Hill	Kelly Williams	James & Joanne Kelly	Kathleen Walsh
Judith Guido	Gabriel Hunicut	Harold Tuchinsky	Craig Ketelson	James B. Watson
	Judith Izzi-Budal	Ralph & Esther Valentine	Alexander Krauss	Cassandra Weston
	Marilyn Jacobs	Aileen Van Brunt	Collin Labutka	Carolyn Weston
	Denise Jennings	Robert S Van Eimeren	Nicole & Andrea Laing	Jill & Mark Williams
	Gordon Johnson	Teresa Vignau	Kelly Lawless	Kelly Williams
	Joy Johnson	Thomas Vranek	Rita Lazzara	Richard Williams
	Nancy Jones	Kelly Williams	Leas Rodman	Thelma Wiseman
	Ellen Joseph	William Wisinski	Roberta Lehrer	Roger Yaseen
	Hudith Just	Robert Yates	Louis Lessard	Gary Zayac
		Gary Zayac		



Box Office: Tuesday - Saturday 10am-4pm | (561) 586-6410
Administrative Office: (561) 586-6169

Audience Feedback: We want to hear from you! Send your ideas, comments, feedback or suggestions to: ssmith@lakeworthplayhouse.org.

Special Needs: The Playhouse is equipped with listening headsets for hearing impaired patrons and special seating for wheelchair patrons.

Ask at the box office.

Group Tickets: 561-586-6169x214 or judith@lakeworthplayhouse.org

Facility Use: ssmith@lakeworthplayhouse.org

Sponsorship: 561-586-6169x210 or daniel@lakeworthplayhouse.org

Advertising: 561-586-6169x216 or justin@lakeworthplayhouse.org

Volunteer: ssmith@lakeworthplayhouse.org

Lake Worth Playhouse Staff

Executive DirectorStephanie Smith
Artistic DirectorDaniel Eilola
Interim Marketing DirectorKatherine Lamb
Education and Outreach Director.....Cathy Randazzo Olsen
Technical Director.....James R. Cartee
Box Office & Group Sales Manager.....Judith Johnson
Film Director & Stonzek Theatre Manager.....Charles Birnbaum
Box Office StaffAmanda Mock,
Dianne Beaton, Jon David Hinostrroza, Saxz Stevens
Shop CarpentersJames Cartee, MA Knoke, David Drain

Lake Worth Playhouse Board

President.....Michael McKeich
Vice President.....Paul Schild
SecretaryTeresa Miller
Director.....Gary Zayac
Director.....Hillary Longo

Playhouse Counsel.....Anthony Aragona

A copy of the official registration and financial information may be obtained from the division of consumer services by calling toll-free (800-435-7352) within the state. Registration does not imply endorsement, approval or recommendation by the state.



facebook.com/lwplayhouse



[@LWPlayhouse](https://www.instagram.com/LWPlayhouse)

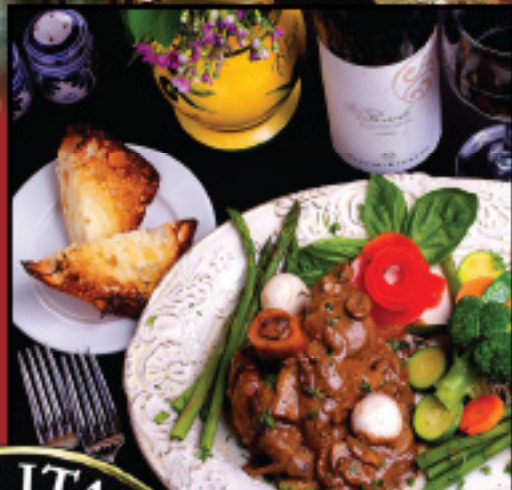


[@LWPlayhouse](https://twitter.com/LWPlayhouse)

**INSPIRED BY THE AUTHENTIC SAVORY
FLAVORS OF CHEF NINO'S HOMETOWN –
THE BEAUTIFUL ISLE OF CAPRI**



**LAKE WORTH'S PREMIER
ITALIAN RESTAURANT
SINCE 2000**



**701 LUCERNE AVE
CORNER OF
LUCERNE & K ST**

**RESERVATIONS
(561)**

547.2782

**RUSTICOITALIANO
@GMAIL.COM**

RUSTICOITALIANO.COM