



FUN HOME

SEPT 30 - OCT 16

713 Lake Avenue, Lake Worth Beach
www.lakeworthplayhouse.org | 561.586.6410



THE IRISH BRIGADE

LAKE WORTH, FL



LIVE
MUSIC
EVERY NIGHT



HAPPY
HOUR
3 pm - 7 pm

MENU & BAND
CALENDAR ON
WEBSITE

Follow us!



theirishbrigade1



facebook.com/Lakeave621

www.irishbrigadepub.com

(561) 585-1885



15%

OFF YOUR CHECK
WHEN YOU BRING
THIS AD PAGE IN!

621 Lake Ave Lake Worth, FL 33460



**CHEF DRIVEN
CLASSIC FOOD
YOU LOVE.**

ELISABETTA'S
RISTORANTE • BAR • PIZZERIA

WPB • DELRAY BEACH

City Oyster
& SUSHI BAR

ATLANTIC AVE • DELRAY BEACH

CITY CELLAR
AMERICAN SCRATCH KITCHEN • BAR • WINE CELLAR

THE SQUARE • WPB

GREASE
BURGERS • BEER • WHISKEY BAR

CLEMATIS ST • WPB

Big City
TAVERN

LAS OLAS BLVD • FT LAUDERDALE

LOUIE BOSSI'S
RISTORANTE • BAR • PIZZERIA

BOCA RATON • FT LAUDERDALE

BARRIO
FOOD • DRINK

THE SQUARE • WPB

Rocco's Tacos
AND TEQUILA BAR

WPB • BOCA • PB GARDENS
FT. LAUDERDALE • ORLANDO
DELRAY BEACH • TAMPA
NAPLES • SARASOTA

BIGTIMERESTAURANTS.COM

A Message From The Executive Director



Welcome to the Playhouse!

On behalf of the Board and Staff of the Playhouse, I would like to extend a warm and heartfelt Thank You. We are thankful and humbled by the support you have shown over the years. We remain committed to bringing you live quality theatrical entertainment.

There are so many ways to contribute to the Playhouse. Volunteering is a great way to be a part. Ushering, helping backstage, costumes, props, and all kinds of other things. Not only does that help us further our mission, but you will be a part of something special with each new show. No special skills needed at all... I promise. Just a kind attitude.

As a registered 501C3 non-profit, all donations are tax deductible to the fullest extent allowed by law. Your contributions go towards so many things including:

- Costumes, microphones, and lumber to build the sets and many more.
- Teaching instructors for kids and adults acting classes, hip hop, musical theatre classes.
- Our outreach program in which we go into the schools and introduce kids to theatre arts.
- Royalties for musicals, plays and independent films.

There are so many ways to make a difference. The fact that you are sitting in your seat right now is helping us further our mission to provide entertainment, education and opportunities for artistic expression through volunteerism, community involvement and support.

We appreciate your patronage. We value you support.

Kind regards and enjoy the show!

A handwritten signature in black ink that reads "Stephanie Smith". The signature is fluid and cursive, with the first name being more prominent than the last.

Stephanie Smith
Executive Director

The Lake Worth Playhouse is a federally registered 501(c)3 non-profit organization (Tax ID# 59-6138280).

Lake Worth Playhouse

Presents



FUN HOME

Music by JEANINE TESORI

Book and Lyrics by LISA KRON

Based on the Graphic Novel by ALISON BECHDEL

Director

SABRINA LYNN GORE

Musical Director
RYAN CROUT

Stage Manager
AMANDA ROSSI

Set/ Lighting Designer
ARDEAN LANDHUIS

Costume Designer
JILL WILLIAMS

Sound Designer
MARTY METS

Technical Director
JAMES R. CARTEE

Originally Produced on Broadway by
Fox Theatricals Barbara Whitman
Carole Shorenstein Hays

Tom Casserly Paula Marie Black Latitude Link Terry Schnuck/Jane Lane The Forstalls
Nathan Vernon Mint Theatricals Elizabeth Armstrong Jam Theatricals Delman Whitney
and Kristin Caskey and Mike Isaacson

The world premiere production of FUN HOME was produced by The Public Theater
Oskar Eustis, Artistic Director Patrick Willingham, Executive Director
In New York City on October 22nd, 2013

FUN HOME was developed, in part, at the 2012 Sundance Institute Theatre Lab at White Oak
and the 2012 Sundance Institute Theatre Lab at the Sundance Resort.

“FUN HOME” is presented by arrangement with Concord Theatricals.
www.concordtheatricals.com

THE VIDEOTAPING OR MAKING OF ELECTRONIC OR OTHER AUDIO AND/OR VISUAL RECORDINGS
OF THIS PRODUCTION AND DISTRIBUTING RECORDINGS OR STREAMS IN ANY MEDIUM, INCLUDING
THE INTERNET, IS STRICTLY PROHIBITED, A VIOLATION OF THE AUTHOR(S)'S RIGHTS AND ACTIONABLE
UNDER UNITED STATES COPYRIGHT LAW. FOR MORE INFORMATION, PLEASE VISIT:
<https://concordtheatricals.com/resources/protecting-artists>

A Message From The Artistic Director



Thank you all for attending and for your support of the Playhouse!

We are proud to open our 70th season with this beautiful and stirring musical - *FUN HOME*. It's a story that grabbed me when I was first introduced to it some years ago. Its a coming of age story, a story of identity, of repression vs openness, of fiction and reality all wrapped up in a beautiful score.

I hope that you all enjoy the journey as much as I.

I want to thank Director Sabrina Lynn Gore for her integrity, intelligence and passion in putting this production together. I also would like to thank our Music Director, Ryan Crout, for his wonderful work bringing this beautiful music to life. Last but not least, kudos to our dedicated and multi-talented stage manager, Amanda Rossi for her fantastic work on this production.

Our 2022-23 mainstage season is filled with a wide variety of exciting shows for the entire community. You can view our line-up for next season inside of this playbill. Subscriptions are now available for our season shows and purchasing a full or partial subscription is a great way to support the Playhouse.

Thank you again for your patronage and support. I hope to see you all again in November as we present *BEEHIVE - THE '60S MUSICAL*.

Enjoy the show!

Daniel Eilola

A handwritten signature of Daniel Eilola in cursive script.

Artistic Director
Lake Worth Playhouse

CAST:

ALISON	JAMIE MATTOCKS
MEDIUM ALISON	JENNA-BROOKE BELLINATO
SMALL ALISON	EDEN GROSS
SMALL ALISON	KAIA DAVIS
BRUCE BECHDEL	MICHAEL COPPOLA
HELEN BECHDEL	AARON BOWER
CHRISTIAN BECHDEL	AVA ANGER
CHRISTIAN BECHDEL	HUGH MOSS
JOHN BECHDEL	VIOLET SEGAL
JOHN BECHDEL	RILEY STANGO
ROY/ MARK/ PETE/ BOBBY JEREMY	MÁRCIO HAMERSCHLAK
JOAN	CAROLINE DOPSON

BAND:

MUSIC DIRECTOR/ KEYBOARD	RYAN CROUT
DRUMS/ PERCUSSION	EMILY MOOREHEAD
BASS	HUNTER ISBELL
GUITAR	CHRIS VALLONE

PRODUCTION TEAM AND CREW:

DIRECTOR	SABRINA LYNN GORE
MUSICAL DIRECTOR	RYAN CROUT
STAGE MANAGER	AMANDA ROSSI
ASST. STAGE MANAGER	EMMA PITOT
SET/ LIGHTING DESIGNER	ARDEAN LANDHUIS
SOUND DESIGNER	MARTY METS
COSTUME DESIGNER	JILL WILLIAMS
COSTUME ASSISTANTS	LARA WILLIAMS, DIANE MILES, MARCI ROBIN
PROPS	PHYLLIS A CAFARELLI
LIGHTBOARD OPERATOR	KEN MOSHER
SOUNDBOARD OPERATOR	JAMES R. CARTEE
SPOT OPERATOR	BILL KNAPP
STAGE CREW	MEGAN POLLAK, ISABELLA MARICONDA
TECHNICAL DIRECTOR	JAMES R. CARTEE
SHOW CARPENTERS	CHIP LATIMER, DAVID
.....	DRAIN, SAXZ STEVENS, SKY PATTERNSON, AL MACHADO, BOB SHARKY, JOE PRIVEE

A Message From The Fun Home Director

Based on the Acclaimed Graphic Novel (dubbed a Family Tragicomic) by Alison Bechdel about growing up as a lesbian with a closeted gay funeral director father, this groundbreaking musical took Broadway by storm. The first of its kind to feature a lesbian as the protagonist, the haunting melody and visceral storytelling, stays with the audience long after the curtain has come down.

The irony of the title, *FUN HOME*, to describe the childhood home our protagonist grows up is not lost on us. The conflicting ideas present in this play about what we think a home should be, how others perceive us, and how we see ourselves, while describing the moniker Alison and her siblings have assigned it, is both tragic and humorous.

At the heart of it, *FUN HOME* is about a father and a daughter, about a family with a secret, and about how we all seek, at some point or other, to unlock the secrets of the past to more fully understand our present.

Regardless of how one identifies, this musical speaks to our humanity and allows everyone to see themselves inside of it. It requires one to think about our own familial relationships that have shaped us, and to examine the challenges that we face to live our truths, and to open our hearts and fly to greater heights by claiming who you are.

We invite you, our beloved audience, to fly with us as Alison introduces you to her family and see how she discovers herself and we hope that you discover something about yourself along the way.

Sincerely,

Sabrina Lynn Gore



Jamie Mattocks (Alison) has appeared onstage here at the Lake Worth Playhouse as Patsy Cline in *ALWAYS... PATSY CLINE* (2020), Pickles in *THE GREAT AMERICAN TRAILER PARK MUSICAL* (2021), and Blanche DuBois in *A STREETCAR NAMED DESIRE* (2022). For Charlie.



Jenna-Brooke Bellinato (Medium Alison) 'JB' is very honored to be a part of the *FUN HOME* cast. Jenna-Brooke has done things from performing and music directing to stage crew and spotlight. JB would like to thank the amazing *FUN HOME* cast & crew, her mom, her amazing girlfriend, Barclay Performing Arts, Troupe 4992, and all her friends and family.



Eden Gross (Small Alison) is thrilled to be making her Lake Worth Playhouse debut! Professionally, Eden has worked with The Wick Theatre in Winter Spectacular and Slow Burn Theatre in *RAGTIME* (Little Girl) which was shut down due to COVID-19. Other favorite roles: *SEUSSICAL JR.* (Cat in the hat), *MATILDA* (Matilda), and *CINDERELLA* (Cinderella). Special thanks to Sabrina Lynn Gore, Amanda Rossi, and LWPH for this incredible FUN opportunity. Eden is eternally grateful to all the professionals who guide her path, as well as her family and friends who support her discovery journey.



Kaia Davis (Small Alison) is thrilled to be making her Lake Worth Playhouse debut! Most recently, Kaia played Alice in *MATILDA* for Slow Burn Theatre. Kaia is eternally grateful for her training at Broadway Bound and all the professionals who help her reach her dreams. Special thanks to Sabrina and LWPH for entrusting her with this beautiful story. Of course, a special shout out to her family and friends for their love and support.



Michael Coppola (Bruce Bechdel) is excited for his debut at the Lake Worth Playhouse. He has been acting professionally for 35 years in New England, NY, and Florida. Favorite stage credits include *JEKYLL & HYDE*, Billy Flynn (*CHICAGO*), Harold Hill (*MUSIC MAN*), Henry Higgins (*MY FAIR LADY*), and Richard Nixon (*FROST/NIXON*). Michael also works in film, television, and industrial videos. He is very grateful to add "*FUN HOME*" to his resume and the Lake Worth Playhouse to his performance venues.

Under The Playhouse Lights



Aaron Bower (Helen Bechdel) is a Kansas City native that now calls Jupiter home. She's been acting professionally since the age of 11 and has worked at many theaters in South Florida. She's also an avid painter and paints on canvas, murals, and on furniture. You can see Aaron in her upcoming shows: Fairy Godmother in *CINDERELLA*, Reno Sweeney in *ANYTHING GOES*, and Meg in *DAMN YANKEES* (Wick Theater). Also, Sleeping Beauty in *DISENCHANTED* (Rinker Playhouse). Thank you for supporting live theater! Aaronbowercreatives.com



Ava Anger (Christian Bechdel) is a 12-year-old theatre major at BAK MSOA who is grateful to return to the LWPH stage and perform with this incredible cast! She thanks Sabrina and the LWPH for this opportunity! When she is not performing, you can find her dancing at Taylor Made Dance & Theatre (TMDT). Appreciation to her teachers/mentors (Angela Morando-Taylor, Shelley Keelor (voice), Tammy Holder (Broward Center Spotlights), and Cathy Randazzo Olsen for their continuous guidance & support. Love to her family & friends for always being there!



Hugh Moss (Christian Bechdel) is ecstatic to be playing Christian Bechdel in *FUN HOME*! This is his first show with LWPH, but he's previously been involved in *ALADDIN* and *JUNIE B. JONES* through elementary school productions. He has loved his time at LWPH and would like to thank Sabrina and the cast and crew for making this such a positive experience. And of course, a big thank you to his family for their continued love and support!



Violet Segal (John Bechdel) is very excited to be making her LWPH debut! Violet recently played Jane Banks in Maplewood Playhouse's production of *MARY POPPINS JR.* and has been cast as Young Elsa in Maplewood's upcoming production of *FROZEN JR.* Thanks to Kim, Devi, Jade, and Demi for teaching her so much! Special thanks to Chelsea at Adriana Zabala Voice and Music Academy for your instruction and guidance. Finally, Violet thanks her friends and family for their support!



Riley Stango (John Bechdel) is excited to be a part of the cast in *FUN HOME*. He first appeared on the LWPH stage as the Bookseller in *BEAUTY AND THE BEAST JR.* Riley is currently in the 4th grade and enjoys playing video games instead of doing homework. He would like to thank his Mom and Dad, cast mates, and the director, for casting him in his first big role. Thank you for helping me grow as an actor.



Márcio Hamerschlag (Roy/ Mark/ Pete/ Bobby Jeremy) is excited to be making his debut at the Lake Worth Playhouse in *FUN HOME*. He previously played Angel in *RENT* at the Barn Theater. As a teenager, Marcio was part of theater productions in Brazil such as *FIDDLER ON THE ROOF*, and *ME AND MY GIRL*. He would like to thank his true fun home: his husband Andrew and son Cooper for their love and support.



Caroline Dopson (Joan) is an educator, actress, and makeup artist located in South Florida. While she is native to Louisiana, she moved to Florida to pursue her MFA in Theatre Performance at FAU where she currently teaches. You can also see her playing Lana Sherwood in New City Player's production of *IT'S A WONDERFUL LIFE* this December. She would like to thank the cast, crew, her fiancé, and her cat for being shining lights <3 <https://www.carolinedopson.com/>



Special Thanks to Amanda Roy, Bad Hair Day Photography, for photographing the show.

Behind The Playhouse Curtains



Sabrina Lynn Gore (Director) is an award-winning actress and singer who has performed in numerous productions across South Florida and New York. Former Managing Director at Outré Theatre Company, and original member of The Victory Dolls (an Andrews Sisters Style vocal group), she is honored to once again be adding Director to her resume. Directing Credits: *PETER AND THE STARCATCHER*, *HEDWIG AND THE ANGRY INCH*, *SWEAT* (LWPH), Uncensored Play Reading Series (Thinking Cap Theatre). Some of her favorite theatre acting credits: *HEAD OVER HEELS* (Queen Gynecia), *MURDER BALLAD* (Sarah), *NEXT TO NORMAL* (Diana, Silver Palm recipient and Carbonell nominated), *PRECIOUS LITTLE* (Brodie), *LIZZIE THE MUSICAL* (Emma Borden), *OTHELLO* (Emilia), *MUCH ADO ABOUT NOTHING* (Beatrice), *DIRTY ROTTEN SCOUNDRELS* (Christine Colgate). Sabrina is also a NASM Certified Nutrition Coach, fitness nerd, proud doggy mom to Biscuit, and the luckiest lady in the world to have Mike as her life partner. She sends YUGE Thank you's to the entire team at LWPH, her dynamic duo Amanda and Ryan, and her incredible cast. You make Mama proud.



Ryan Crout (Musical Director) is a local actor, musician, and music director in the South Florida area. Some of his credits include John Belushi (*NOT READY FOR PRIMETIME*), Cooper (*ISLAND SONG*), and Music Director/Piano for shows such as *IN THE HEIGHTS* and *NUNSENSE: A-MEN*, among many others. He would like to thank Sabrina and Daniel for the opportunity to be a part of this production. Ryan is extremely grateful for his parents, friends, and girlfriend Noah for their unwavering love and support.



Amanda Rossi (Stage Manager) is so excited to be working on her third show at the Lake Worth Playhouse. Recent credits include *WE WILL ROCK YOU* (ASM) and *PETER AND THE STARCATCHER* (SM). She is so honored to be the Stage Manager of this wonderful show! She would like to thank the fantastic cast and crew, her family, her amazing girlfriend, and her friends for all their support.



OUR 70TH SEASON



FUN HOME
SEPTEMBER 30 -
OCTOBER 16, 2022



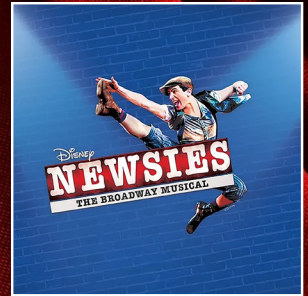
BEEHIVE: THE 1960S
MUSICAL
NOVEMBER 11 - 20, 2022



GUYS AND DOLLS
JANUARY 20 -
FEBRUARY 5, 2023



DIAL "M" FOR MURDER
MARCH 3 - 12, 2023

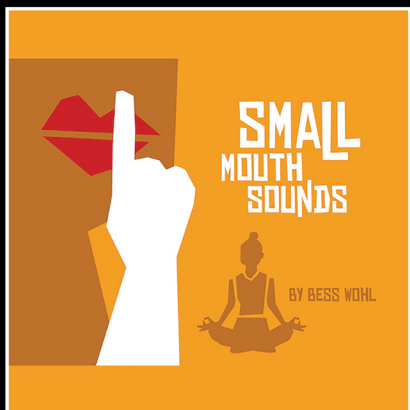


NEWSIES THE
BROADWAY MUSICAL
APRIL 14 - 30, 2023

713 Lake Avenue
Lake Worth Beach, FL. 33460
Box Office: 561.586.6410
www.lakeworthplayhouse.org



22/23 SEASON

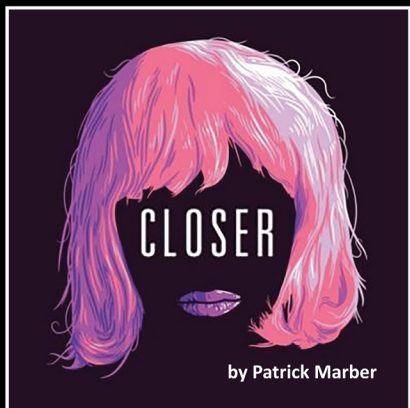
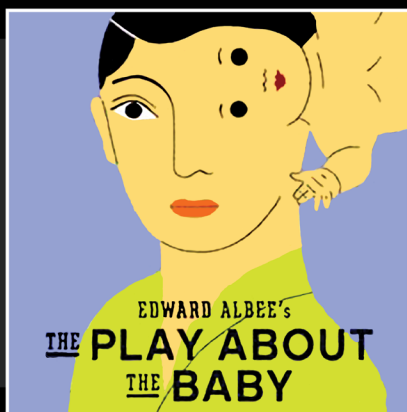


SMALL MOUTH SOUNDS NOVEMBER 18 - 27, 2022

In the overwhelming quiet of the woods, six runaways from city life embark on a silent retreat. As these strangers confront internal demons both profound and absurd, their vows of silence collide with the achingly human need to connect.

THE PLAY ABOUT THE BABY JANUARY 27 - FEBRUARY 5, 2023

Equally hilarious and frightening, this play is a darkly comic dramatic fable by Pulitzer and Tony-winning playwright Edward Albee. A young couple, madly in love with each other and their child, find their picture-perfect life interrupted when an older couple steals their baby.



CLOSER MAY 5 - 14, 2023

Winner of 1997 Olivier award for Best New Play and Tony Award winner, Closer is about four lives that intertwine over the course of four and a half years in a stinging look at modern love and betrayal. Twelve scenes chronicle the love affairs, rivalries, seductions, and betrayals of four characters in a spare, intense style.

LIMITED ENGAGEMENTS

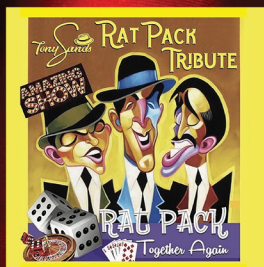


December 2 - 4

When Annie's husband dies of leukemia, she and best friend Chris resolve to raise money for a new settee in the hospital by persuading four fellow Women's Institute members to pose nude with them for an "alternative" calendar.

December 9, 2022

Join our favorite Queens and host Pepper Monroe at her annual holiday celebration! Be prepared to laugh your way into the holiday season that will want you coming back for more!



January 25, 2023

'LAUGH OUT LOUD' comedy, marvelous melodies, & TERRIFIC TAP! Three amazing talents that will take you back to when seeing Frank, Dean, & Sammy in Vegas was the ultimate event in show biz!

March 8, 2023

Sands takes you from the silver screen of Hollywood, to Frank's Main Event comeback. Sinatra's best loved songs are performed in this sensational storytelling musical.



March 18, 2023

This annual Drag Show Fundraiser is back by popular demand for ITS SIXTEENTH consecutive year! A high-energy drag concert that features a cast of dazzling drag divas.





Welcome to the Lake Worth Playhouse!

Dear Valued Patron:

The Board of Directors, Staff, and dedicated volunteers of the Lake Worth Playhouse would like to express how excited we are to present to you our 70th season of live theatre!

We, at the Playhouse, strive to remain the best community theatre in all of South Florida. In order to maintain our commitment to excellence, we are always striving to improve the quality of our productions for your enjoyment and have made a personal commitment to the raising of funds to upgrade our sound and lighting equipment.

The Playhouse now asks for your support to help us accomplish this goal.

We have created the "Playhouse's 120 Challenge" to encourage 120 patrons to pledge \$120 each. If you are like us, you cannot always write a check or may not have an extra \$120 to give away, so we have set up a sustainer account. If you pledge \$120 we will only bill you \$10 a month on your credit card for the next 12 months. That is the equivalent to a few cups of specialty coffee or maybe a take-out lunch!

Many patrons have already joined the challenge. Please consider joining them in supporting excellence in the arts by also becoming a "Playhouse's 120 Challenge" member.

Fill out the form below and turn it into the Box Office.

Thank You,

The Lake Worth Playhouse Board of Directors & Executive Staff

FLORIDA DEPARTMENT OF AGRICULTURE & CONSUMER AFFAIRS REGISTRATION # - CH9675
A COPY OF THE OFFICIAL REGISTRATION AND FINANCIAL INFORMATION MAY BE OBTAINED FROM
THE DIVISION OF CONSUMER SERVICES BY CALLING TOLL-FREE (800-435-7352) WITHIN THE STATE.
REGISTRATION DOES NOT IMPLY ENDORSEMENT, APPROVAL, OR RECOMMENDATION BY THE STATE.

THANK YOU FOR YOUR SUPPORT OF LWPH

Yes, I would like to support the Lake Worth Playhouse
with my gift of \$120 for the "Playhouse's 120 Challenge"!

Please print clearly:

Name: _____

Address: _____

City/State/Zip: _____

Phone: _____

☐ Check ☐ Credit Card (one time) ☐ Credit Card (\$10 a month)

Card Number: _____

Security Code _____ Expiration Date: ____/____/____

VOLUNTEERS ARE ALWAYS WELCOME AND
THE LIFEblood OF OUR ORGANISATION

*Complete your school or community service hours
here at the playhouse!*

- Backstage-
- Lighting-
- Sound-
- Ushers-

MARIO'S LAKE AVE

Directly east of Lake Worth Playhouse on the south side of the street



"Perfect Pair"

**singing Broadway Tunes & Standards
on Saturday night starting at 8:30pm**

Early Bird Special \$22

4pm-6pm Tuesday-Saturday
1pm-6pm on Sunday (seated by 5:30pm)

Your Choice of Entree:

With Salad or Soup & Coffee or Tea

Cavatelli with Meatball or Sausage • Penne alla Vodka
Eggplant Parmigiana • Eggplant Rollatini • Cheese Canneloni
Lasagna • Chicken Marsala • Chicken Parmigiana • Veal Parmigiana
Veal Francaise • Shrimp Scampi • Snapper Francaise
Snapper with Sundried Tomatoes & Artichokes • Grilled Salmon

No substitutions please.

561-582-3013

**707 LAKE AVE., LAKE WORTH BEACH
RESERVATIONS RECOMMENDED**

Don't worry about parking.... There is valet!

Closed Mondays. Open at 4pm. Sundays at 1pm. Take-out available.



Compass' mission is to engage, empower and
enrich the lives of lesbian, gay, bisexual,
transgender and queer (LGBTQ) people and
those impacted by HIV and AIDS.



COMPASS
COMMUNITY CENTER

Compass Community Center
201 N Dixie Hwy
Lake Worth Beach, FL 33460
CompassGLCC.com | 561-533-9699

LAKE WORTH'S FAVORITE GATHERING SPOT

*(But don't tell anyone...
the locals might get mad)*

- DAILY SPECIALS
- OPEN AIR DINING

632 LAKE AVENUE
LAKE WORTH
588-5208



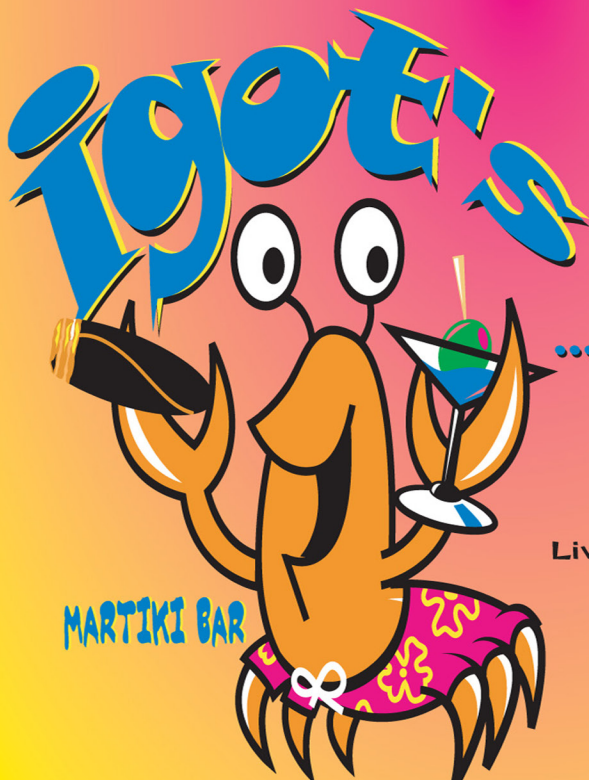
EST. 1999

CRABS
CLAMS
OYSTERS

FRESH FISH • PRIME RIB
BABY BACK RIBS

Corner of Lake Ave and K Street

JOIN US
BEFORE OR
AFTER THE SHOW



...TO HAVE A DRINK

LOCATED NEXT DOOR
TO DAVE'S

Live Entertainment Thur - Sun

702 LAKE AVENUE
LAKE WORTH
582-IGOT

www.daveslastresort.com



LAKE WORTH
PLAYHOUSE



BEEHIVE

THE '60s MUSICAL

NOVEMBER 11 - 20, 2022

BEEHIVE – The '60s Musical is a loving, rockin' celebration of that era's powerful female voices whose music stands the test of time – including Diana Ross, Janis Joplin, Carole King, Aretha Franklin, and Tina Turner! With over two dozen timeless hits, including "It's My Party," "Will You Still Love Me Tomorrow?" "Where the Boys Are," and "You Don't Own Me," the show takes you on a song-filled journey told from the perspective of six women coming of age during this unforgettable time, taking us from their first Beehive Dance through a decade of change. BEEHIVE – The '60s Musical will have you dancing in the aisles!

713 Lake Avenue, Lake Worth Beach

www.lakeworthplayhouse.org | 561.586.6410





*Proudly
Supporting
the Arts*

**LIVE & LOCAL
IN PALM BEACH COUNTY
LEGENDSRADIO.COM**

PROUD SPONSOR OF THE LAKE WORTH PLAYHOUSE
2022 - 23 SEASON

SUNNY 107.9 FM



THE GREATEST HITS OF THE
70'S, 80'S, & 90'S

WWW.SUNNY1079.COM

You're Only One Block Away From
LEATHER, ART & GUITARS
by Memory Trees



Charity Gift Shop | Museum | Gallery | Exhibition

Unique Art | Handmade Guitars & Ukuleles | Handmade Leathers

810 Lake Ave, Lake Worth | 561.290.8833 | shop@memorytrees.co | www.memorytrees.co

Lake Worth Playhouse Donors

20,000+	Anthony Lafaso	John Kane	Robert Yates	Louis Lessard
Palm Beach County Cultural Council	Kendra Scott	Paul Keihner	Gary Zayac	Elise Levine
Prime Time Palm Beach County	Bernice Lennon	Jim Kelly	Shirley Zeikind	William Levy
Anonymous	Hillary Longo	Michael Kiel	Michele & Amie Garber in memory of Bill Baron	Bernard Liebman
	John Petronio	Dr. Richard Klein	OTHER	Anthony Lafaso
10,000+	Justine Postal	Ricky Klimas	4Seasons/Vegan	Antoinetta Lorina
Florida Division of Cultural Affairs	David Fleisher	Joseph Kolb	Stephanie Ader	Laura Lowman
Anonymous	Marie-Christine Leavitt	Irv Kramer	Doris Adler-Fagin	Antoinetta Lorina
	Beatrice Perkins	Collin Labutka	Madeline Anblinder	Gene Makoski
5,000+	united way of Palm Beach County Inc	Kathleen E Lacroix	Jeanette Ariola	Alice Mann
Anonymous	Richard R. Raphael	Kelly Lawless	Marcele Bassett	Tamar Martens
Anonymous	Lois Richman	Rodman Leas	Susan Baucher	Erin Martin
Anonymous	Lynn Salvo	Kirsten Lee	Happy Birthday Mary Keymer	Steven Marturano
Anonymous		Louis Lessard	Sarah Becker	Jerry Mathew
	100+	Lauren Levy	Behemoth	Russell McCrary
2,500+	Doris Adler-FaginMichael Alosso	William Levy	Harland Beispiehl	Michael McKeich
Anonymous	Bonnie Avery	Roberta Lima	Marc Beresin	Gene Makoski
M.A. Knoke	Gary Aviv	Frederic Llorens	Sidney Blattstein	Donald Michals
	Jane Bachmann	Anthony Lafaso	Michael Bloeth	Marion Nahmmacher
1,000+	Susan Baucher	Kenisha Luby	Edward Bonner	John Noles
Anonymous	David Bradford	John Maletto	Michael Breitenbeck	Robert Nichols
Anonymous	Deana Jo Booker	Alice Mann	Barry Brimacombe	Bonnie Niernan
Roy Cacciaguida	The Boston Art Club	Ronnie Marcus	Anita Brown	Megan Pollack
In memory of Hal Johnstone	Robert Bucchere	Elaine Marth	Tyler Code	Christine Mohanty
John Geberth	Matthew Fabio Burton	Joseph Mastrullo	Vincent Cerniglia	Catherine Mulcahey
Mary Keymer	Ted Brownstein	Martha Mayo	Nancy Cohen	Esther Nitto
Joseph Kolb & Michael Hoagland	Daniel Carballeira	Celia McEaney	Miriam Cornelius	Roseann Ogonowski
Lake Worth Lions Club	Doris Chaffin	Teresa Miller	Joyce Cornick	Rosalie Oughterson
Dana Fishkin, Jody Sikar and Esther	Jennifer Christiansen	Joel Mirer	Linda Cox	John Paul
Patric McPoland	Chris Cimorelli	Ken Mosher	Susan Davidson	Adrienne Percival
Stuart Opolowsky	Shauna Coolican	Marion Nahmmacher	Susy Diaz	Anthony Peterson
Michele Kurucz Peel	Thomas Copeland	Valerie Nemirov	Janet D'Amico	Vince Petrovsky
Richard & Charlene Raphael	Joyce Cornick	Esther Nitto	Gwen D'Amico	Clayton P Phillips
In Memory of Betty & Charlie Hall	Vincent Corso	Donald Odell	Nancy Dickenson	Megan Pollack
Renaissance Charitable Foundation	Janet D'amico	Rosalie Oughterson	Joan Dilorio	Janet Porfnow
Carran Scyhneider	Susan Davidson	Patricia Owens	Mary Jean Etario	Elena Postal
Dawn Silver	Robert Davis	Mike Perez	Matthew Fabio Burton	Larry Preiser
Richard Swick	Susy & Michael Plesco	Beatrice Perkins	William Feldcamp	Patricia Prunier
Weidemeyer Family Fund	Donna Donelan	David Perlmutter	Diane Femia	E.R. Randall
In Honor of: Mimi May & Tom	Larry Dougher	Katie Petronio	Anita Finley	Beth Ravitz
Weidemeyer Jr	Dorothy S. Hernandez	Vince Petrovsky	M Lynn Fisher	Jose Reinoso
Patricia Weaver	Larry Edwards	Sam Pittaro	Patricia Flynn	Andrew Richards
Roy Bartolomei & Peter Wronsky	Stacey Einhorn	Darla Pollard	Carolynn Foley	Seymore Rifkin
	Marcia Elgin	Janet Porfnow	Ron Fox	Bonnie Robeson
500+	May Jean Etario	Chiam Randall	Michael Francis	Nicole Rokos
The Allstate Foundation	EW Foundation	Keith Rankin	John Fraumeli	Paul Rosen
Joy Booth	Joan Farrell	Gloria & Al Raya	Madalynn Friedman	Missy Rovinelli
Liz Bradley	Neil Feinstein	Joel Risch	Kathleen Fryer	Joseph Ruggiero
Phyllis Cafarelli	William Feldkamp	Joseph Rodkey	Ira Furman	Pamela Saba
Sharon DePalma	Diane Femia	Nicole Rokos	Lisa Gianini	Ruth Sabo
Dr Thomas & Elaine Ermolovich	Celia Fischer	Paul Rosen	Deborah Goldfarb	Lynn Salvo
John Geberth	Lynn Fisher	Jane Rothchild	Lenore Goldfeder	Marie Sanderson
Gary Goldring	David and Sue Fleisher	Amanda & David Roy Family	Marci Gorman	Joyce Sasser
Joseph Kolb	Patricia Flynn	Constance Russell	Alan Gurvis	Jeanne Shapiro
Hillary Longo	Carolynn Foley	Joyce Sasser	Gail Hahn	Jon Schmeyer
Patric McPoland	Richard Forbes	Mitchell Scholar	Charles Hamdewerger	Linda Schultz
Palm Beach Pops	Jane Fox	Arlene Schwartz	Lucia Hare-Leahy	Samuel Schwab
Parrot Cove Neighborhood Association	Helen Franke	Richard Schwartz	Mary C. Hayes	Arlene Schwartz
Peel, Michele Kurucz	Kenneth Friedman	Linda Schultz	Jennifer Harrington	Richard Schwartz
Michele May	Daniel Furio	Stuart Scharf	Carol Hershey	Barry Segal
Caryn Picker	Ira Furman	Ruth Sells	Janice Hobbs	Ruth Sells
Raphael, Richard R.	Marie Gabrielson	Gail Seltzer	Theresa Hunt	Dale Smith
In Memory of Betty & Charlie Hall	Andrea Gershbein	Alissa Shultz	Mary Hynes	Laura Smith
Paul Schild	Judith Guido	Lawrence Stedlik	In Honor of Joseph Beaton	Katie Stein
Richard Swick	Stephanie Haber	David Simson	Judy Intraub	Susan Storms
G.S. Voss	Gail Hahn	Sara Skillern	Susan Isreal	Roman Swiercz
Patricia Weaver	Tonya hamm	Laura Smith	Kingsley Itsede	Henny Swinkels
Thomas Weidemeyer	Arthur Harris	Peter Spinner	Elien Joseph	Jef Syx
Roy Bartolomei & Peter Wronsky	Lucia Hare-Leahy	Sandra Sullivan	Joy Johnson	Peni Banister
	Diana Henry	Paul Anthony Tassa	Amanda Kahn	Andrea Thomas
	Carol Hershy	Sunny Thayer	Michele Kargol	Mary Troiano
250+	Patricia Highland	Laura Tindall	In memory of Bill Baron	Teresa Vignau
Gary Aviv	Patricia Higgins	Brian Tivnan	Seymour Katz	G.S. Voss
Chet Duncan	Tina Hill	Patricia K. Train	James & Joanne Kelly	Robert Wohlst
William Feldkamp	Gabriel Hunicut	Irish weaver	Craig Ketelson	Kathleen Walsh
Ira Furman	Judith Izzi-Budal	Kelly Williams	Donna Kramer	James B. Watson
Andrea Goldberg	Marilyn Jacobs	Harold Tuchinsky	Alexander Krauss	Cassandra Weston
May Goodstein	Denise Jennings	Ralph & Esther Valentine	Collin Labutka	Carolyn Weston
Greg Harrison	Gordon Johnson	Aleen Van Brunt	Nicole & Andrea Laing	Jill & Mark Williams
Barbara Lederberg	Joy Johnson	Robert S Van Emmeren	Kelly Lawless	Kelly Williams
Marie-Christine Leavitt	Nancy Jones	Teresa Vignau	Rita Lazzara	Richard Williams
Judith Guido	Ellen Joseph	Thomas Vranek	Leas Rodman	Theima Wiseman
MaryLou Gray	Hudith Just	Kelly Williams	Roberta Lehrer	Roger Yaseen
		William Wisinski		Gary Zayac



Box Office: Monday - Saturday 10am-4pm | (561) 586-6410
Administrative Office: (561) 586-6169

Audience Feedback: We want to hear from you! Send your ideas, comments, feedback or suggestions to: ssmith@lakeworthplayhouse.org.

Special Needs: The Playhouse is equipped with listening headsets for hearing impaired patrons and special seating for wheelchair patrons.

Ask at the box office.

Group Tickets: 561-586-6169x214 or judith@lakeworthplayhouse.org

Facility Use: ssmith@lakeworthplayhouse.org

Sponsorship: 561-586-6169x210 or daniel@lakeworthplayhouse.org

Advertising: 561-586-6169x216 or katherine@lakeworthplayhouse.org

Volunteer: ssmith@lakeworthplayhouse.org

Lake Worth Playhouse Staff

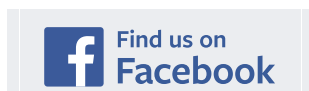
Executive Director.....	Stephanie Smith
Artistic Director	Daniel Eilola
Marketing Director	Katherine Lamb
Marketing Intern	Maya Suchy
Technical Director.....	James R. Cartee
Box Office & Group Sales Manager.....	Judith Johnson
Film Director & Stonzek Theatre Manager.....	Charles Birnbaum
Box Office Staff	Dianne Beaton,
..... Jon Hinostroza, Emma Sue Harris, Alveiro Machado, Saxz Stevens	
Shop Foreman	Nelson Stone
Master Carpenter.....	M.A. Knoke

Lake Worth Playhouse Board

President.....	Michael McKeich
Vice President.....	Paul Schild
Secretary	Teresa Miller
Director.....	Gary Zayac
Director.....	Hillary Longo

Playhouse Counsel..... Anthony Aragona

A copy of the official registration and financial information may be obtained from the division of consumer services by calling toll-free (800-435-7352) within the state. Registration does not imply endorsement, approval or recommendation by the state.



facebook.com/lwplayhouse




[@LWPlayhouse](https://www.instagram.com/LWPlayhouse)



[@LWPlayhouse](https://twitter.com/LWPlayhouse)



FRESH • AUTHENTIC • ELEGANT This is how Italians eat.

"This spectacular Italian restaurant epitomizes the ultimate romantic dining experience. Discover the best of the romantic island of Capri recreated at Lake Worth's premier Italian restaurant." Braman Porsche 

"If you want 'versatilita Italiana,' you'll find it here. The ambience, quality and location make this an ideal spot for a romantic meal or small family gathering." The Palm Beach Post

"I like to visit Lake Worth to dine — one of my favorites is Rustico Italiano." Carleton Varney, Dorothy Draper & Co.



since 2000

RUSTICO ITALIANO

701 Lucerne Ave • Lake Worth, FL

561.547.2782

rusticoitaliano.com