



# GOYSDOLLS

**JANUARY 20 - FEBRUARY 5**

713 Lake Avenue, Lake Worth Beach  
[www.lakeworthplayhouse.org](http://www.lakeworthplayhouse.org) | 561.586.6410

# THE IRISH BRIGADE

LAKE WORTH, FL



LIVE  
MUSIC  
EVERY NIGHT



HAPPY  
HOUR  
3 pm - 7 pm

MENU & BAND  
CALENDAR ON  
WEBSITE

Follow us!



theirishbrigade1



facebook.com/Lakeave621

[www.irishbrigadepub.com](http://www.irishbrigadepub.com)

(561) 585- 1885



15%

OFF YOUR CHECK  
WHEN YOU BRING  
THIS AD PAGE IN!

621 Lake Ave Lake Worth, FL 33460







**CHEF DRIVEN  
CLASSIC FOOD  
YOU LOVE.**

**ELISABETTA'S**  
RISTORANTE • BAR • PIZZERIA

WPB • DELRAY BEACH

**City Oyster**  
& SUSHI BAR

ATLANTIC AVE • DELRAY BEACH

**CITY CELLAR**

AMERICAN SCRATCH KITCHEN • BAR • WINE CELLAR

THE SQUARE • WPB

**GREASE**  
BURGERS • BEER • WHISKEY BAR

CLEMATIS ST • WPB

**Big City**  
TAVERN

LAS OLAS BLVD • FT LAUDERDALE

**LOUIE BOSS'S**  
RISTORANTE • BAR • PIZZERIA

BOCA RATON • FT LAUDERDALE

**BARRIO**  
FOOD • DRINK

THE SQUARE • WPB

**Rocco's Tacos**  
AND TEQUILA BAR

WPB • BOCA • PB GARDENS  
FT. LAUDERDALE • ORLANDO  
DELRAY BEACH • TAMPA  
NAPLES • SARASOTA

**BIGTIMERESTAURANTS.COM**

# A Message From The Executive Director



Welcome to the Playhouse!

On behalf of the Board and Staff of the Playhouse, I would like to extend a warm and heartfelt thank you. We are thankful and humbled by the support you have shown over the years. We remain committed to bringing you live quality theatrical entertainment.

There are so many ways to contribute to the Playhouse. Volunteering is a great way to be a part. Ushering, helping backstage, costumes, props, and all kinds of other things. Not only does that help us further our mission, but you will be a part of something special with each new show. No special skills needed at all... I promise. Just a kind attitude.

As a registered 501C3 non-profit, all donations are tax deductible to the fullest extent allowed by law. Your contributions go towards so many things including:

- Costumes, microphones, and lumber to build the sets and many more.
- Teaching instructors for kids and adults acting classes, hip hop, musical theatre classes.
- Our outreach program in which we go into the schools and introduce kids to theatre arts.
- Royalties for musicals, plays and independent films.

There are so many ways to make a difference. The fact that you are sitting in your seat right now is helping us further our mission to provide entertainment, education and opportunities for artistic expression through volunteerism, community involvement and support.

We appreciate your patronage. We value your support.

Kind Regards and enjoy the show!

A handwritten signature in dark ink, appearing to read 'Stephanie Smith'. The signature is fluid and cursive, with a large 'S' at the beginning and a stylized 'Smith' at the end.

Stephanie Smith  
Executive Director

The Lake Worth Playhouse is a federally registered 501(c)3 non-profit organization (Tax ID# 59-6138280).



Executive Director STEPHANIE SMITH  
Artistic Director DANIEL EILOLA

# Lake Worth Playhouse

*Presents*



## GUYS AND DOLLS

*A Musical Fable of Broadway*

*Based on a Story and Characters of Damon Runyon*

**Musical and Lyrics by:**  
**FRANK LOESSER**

**Book by:**  
**JO SWERLING and**  
**ABE BURROWS**

*Director & Choreographer*  
**JOANNE DEPRIZIO**

*Stage Managers*  
**VICTORIA GOULET**  
**LILLIAN ROY**

*Musical Director*  
**ED KOLCZ**

*Costume Designer*  
**JILL WILLIAMS**

*Set/ Lighting Designer*  
**ARDEAN LANDHUIS**

*Sound Designer*  
**MARTY METS**

*Technical Director*  
**JAMES R. CARTEE**

*“GUYS AND DOLLS” is presented through special arrangement with Musical Theatre International (MTI). All authorized performance materials are also supplied by MTI. [www.mtishows.com](http://www.mtishows.com)*



THE VIDEOTAPING OR MAKING OF ELECTRONIC OR OTHER AUDIO AND/OR VISUAL RECORDINGS OF THIS PRODUCTION AND DISTRIBUTING RECORDINGS OR STREAMS IN ANY MEDIUM, INCLUDING THE INTERNET, IS STRICTLY PROHIBITED, A VIOLATION OF THE AUTHOR(S)'S RIGHTS AND ACTIONABLE UNDER UNITED STATES COPYRIGHT LAW.

## A Message From The Artistic Director



Thank you all for attending and for your support of the Playhouse!

We are very excited to present *Guys and Dolls*. Kudos to Director & Choreographer – Joanne DePrizio, Music Director – Ed Kolcz, Costume Designer – Jill Williams, Assistant Choreographer – Elizabeth D’Amico, and our wonderful Stage Managers – Victoria

Goulet and Lillian Roy for their fantastic work on this production. Also, a big thank you to our entire cast and crew who have worked so tirelessly to make this show a reality.

The remainder of the 2023 season offers a variety of exciting shows for the entire community. You can view our line-up inside this playbill.

Thank you again for your patronage and support. I hope to see you all again in March for the classic thriller – *Dial M for Murder*.

Enjoy the show!

Daniel Eilola

A handwritten signature in cursive script that reads "Daniel Eilola".

Artistic Director  
Lake Worth Playhouse



**CAST:**

<b>SKY MASTERSON</b>	RYAN STENDER
<b>SARAH BROWN</b>	ELIZABETH ROBINSON
<b>NATHAN DETROIT</b>	MATTHEW SCHENK
<b>MS. ADELAIDE</b>	JB PETERS
<b>NICELY-NICELY JOHNSON</b>	BILLY VITUCCI
<b>BENNY SOUTHSTREET</b>	CHARLES PONTTHOKKAN
<b>ARVIDE ABERNATHY</b>	SCOTT SEGALL
<b>AGATHA/ ENSEMBLE</b>	JILL WILLIAMS
<b>CALVIN/ ENSEMBLE</b>	CARL VANDYKE
<b>GENERAL MATILDA B. CARTWRIGHT/ ENSEMBLE</b>	MARCI ROBIN
<b>LT. BRANNIGAN</b>	BOB SHARKEY
<b>HARRY THE HORSE</b>	DANNY DISTASIO
<b>BIG JULE</b>	PATRICK PRICE
<b>ANGIE THE OX/ MST CEREMONIES/ ENSEMBLE</b>	DANIEL RUIZ
<b>RUSTY CHARLIE/ ENSEMBLE</b>	CHRIS OMBRES
<b>SOCIETY MAX/ ENSEMBLE</b>	TRENTEN HAZELTON
<b>HOT BOX GIRL/ MIMI/ ENSEMBLE</b>	KALISTA CURBELO
<b>HOT BOX GIRL/ FERGUSON/ ENSEMBLE</b>	MEGAN CIRES
<b>HOT BOX GIRL/ VERNON/ ENSEMBLE</b>	KATHERINE LAMB
<b>HOT BOX GIRL/ ALLISON/ ENSEMBLE</b>	RENAE ROVNYAK
<b>JOEY BILTMORE/ ENSEMBLE</b>	THOMAS HALLETT
<b>TOMMY DIRTY SHOES/ ENSEMBLE</b>	STEVEN TOFFLER
<b>LIVER LIPS LOUIE/ ENSEMBLE</b>	ADAM CARTER
<b>MARTHA/ ENSEMBLE</b>	DIANE BACON MILES
<b>FRANKIE STEPPS/ ENSEMBLE</b>	SETH SUCHY

**PRODUCTION TEAM AND CREW:**

<b>DIRECTOR &amp; CHOREOGRAPHER</b>	JOANNE DEPRIZIO
<b>MUSICAL DIRECTOR</b>	ED KOLCZ
<b>ASSISTANT TO THE CHOREOGRAPHER</b>	ELIZABETH DAMICO
<b>STAGE MANAGER</b>	VICTORIA GOULET
<b>STAGE MANAGER</b>	LILLIAN ROY
<b>DANCE CAPTAIN</b>	KALISTA CURBELO
<b>SET/ LIGHTING DESIGNER</b>	ARDEAN LANDHUIS
<b>SOUND DESIGNER</b>	MARTY METS
<b>COSTUME DESIGNER</b>	JILL WILLIAMS
<b>COSTUME ASSISTANTS</b>	LARA WILLIAMS, LORI TOFFLER, SUE ELLEN FLESCHER
<b>PROPS</b>	PHYLLIS A CAFARELLI
<b>LIGHTBOARD OPERATOR</b>	ANNA DASILVA
<b>SOUNDBOARD OPERATOR</b>	EMMA PITOT
<b>SPOT OPERATOR</b>	KEN MOSHER, BILL KNAPP
<b>CREW</b>	HEATHER FORTNER, ANTUANETTE CAMACHO, AMANDA ROSSI
<b>TECHNICAL DIRECTOR</b>	JAMES R. CARTEE
<b>SHOW CARPENTERS</b>	SAXZ STEVENS, DAVID DRAIN, ALVEIRO MACHADO, BOB SHARKEY, NELSON STONE, DIANE BACON MILES, M.A. KNOKE

## Under The Playhouse Lights



**Ryan Stender** (Sky Masterson) is excited to be returning to the Lake Worth Playhouse after his most recent roles in *The Wizard of Oz* and *9 to 5 The Musical*. Much love to his friends, family, and all those involved in *Guys and Dolls* for making this such a fun and rewarding experience. Special shout-out to his favorite two “dolls” and “L” for their continued love, encouragement, and support. I love you a bushel and a peck...Let’s Go!



**Elizabeth Robinson** (Sarah Brown) is beyond excited to be back onstage at her favorite theatre! Previous credits include *Why Do Fools Fall in Love?* (Dee Dee), *Sondheim on Sondheim* (Barbra Cook) and *We Will Rock You* (KISS). Love and major props to the cast, crew, and creative team. Hi Mom and Dad!



**Matthew Schenk** (Nathan Detroit) is back on stage after a brief 20-year hiatus. He will refrain from promoting his podcast (The New Way) so that he can talk your ear off about movies, TV, and theatre in person. But he WILL ask you to listen to selections from his musical versions of *Roadhouse* and *BASEketball*. He’d like to thank the Playhouse for affording him the opportunity to portray this bucket list role. He aspires to continue playing any other stage roles originally perfected by Nathan Lane.



**JB Peters** (Ms. Adelaide): When JB first started acting, her terrific parents went around the country to see her perform in some real clunkers! They were still hanging in there with her when, 20 years ago, she was finally cast in the ensemble of a great little Wisconsin theatre’s production of *Guys & Dolls*. She’s never forgotten their smiles during that curtain call. This is for you, Mom & Dad. Thanks also to the LWPH for the opportunity to perform this wonderful musical again.



**Billy Vitucci** (Nicely-Nicely Johnson) is thrilled to be making his debut with LWPH. This marks his sixth production of *G&D* in a different role in each. Billy thanks his Mom, family, and friends, for their support and his staff up North. Shout out to Doc Browns “Really Bad” Rum Cakes for the treats he eats during the show. Try them, they’re yummy! Favorite roles include Archibald Craven in *The Secret Garden*, George in *Sunday in the Park* and Roger Dupree in *The Producers*.





**Charles Ponthokkan** (Benny Southstreet) is excited to be making his Lake Worth Playhouse debut! Past credits include *Joseph and The Technicolor Dreamcoat* and *How to Succeed in Business Without Really Trying*. He currently lives in West Palm Beach and enjoys cooking and singing karaoke in his free time. He would like to thank the cast, crew, production team, friends, and family for all their support!



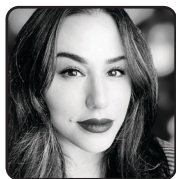
**Scott Segall** (Arvide Abernathy): This is Scott's 4th performance with LWPH, having played Saul Kimmer in last season's *True West*, Herbie in *Gypsy* (2020), and Herr Schultz in *Cabaret* (2015). Many moons ago he acted professionally in Los Angeles, including an episode on *Murder She Wrote*. Since the age of ten, he has performed regularly in New Jersey musical theatre. Scott thanks his loving parents, 'Ed & Nat', who schlepped him to countless rehearsals and always encouraged and supported his lifelong passion for the stage.



**Jill Williams** (Agatha/ Ensemble) is honored to march for the souls of these fabulous *Guys and Dolls*! Other favorite roles at LWPH include Mother Superior/*Sister Act*, Ethel/*Footloose*, Electra/*Gypsy*, Glinda/*Wizard of Oz*, Tracey/*Sweat & Annie/Calendar Girls*. Jill also had the privilege of designing the costumes for this production and several past productions at LWPH. Thank you LWPH, Joanne, Vicki, Lillian, cast/crew! As always... for my heart...M,B,L,C!

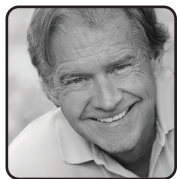


**Carl VanDyke** (Calvin/ Ensemble) graduated from Florida State University with a degree in Music, where he was active in the University Symphony, Opera, and the FSU Gospel Choir. He recently played Fester in *The Addams Family Musical* and Pulitzer in *Newsies*. Nominated for an award here at LWPH for last season's *Wizard of Oz*, he would like to thank the audience for making live theatre possible in South Florida.



**Marci Robin** (General Matilda B Cartwright/ Ensemble) has appeared in several Lake Worth Playhouse shows, including *9 to 5* (Doralee), *Annie* (Miss Hannigan), and *Gypsy* (Mazeppa). During her senior year of high school, she fractured her stupid wrist while rehearsing for *Guys & Dolls* and had to drop out of the production, so she's delighted to finally see it all the way through after a whopping 25 years — especially alongside her fiancé, Chris.

## Under The Playhouse Lights



**Bob Sharkey** (Lt. Brannigan): A native of New Jersey, this is Bob's fifth show at LWPH and first musical ever. He has appeared in numerous stage productions in New Jersey and Florida. Actor/Producer credits include *A Class Act* at Mizner Park Cultural Center and *Casa Valentina* at Empire Stage in Fort Lauderdale. Thanks for being here. Enjoy the show.



**Danny Distasio** (Harry the Horse): This is Danny's sixteenth show with the LWPH, previously appearing as part of the Black Box series in *Small Mouth Sounds*, *Mr Burns*, *Sweat*, as well as here on the Main Stage in *Great American Trailer Park Christmas Musical*, *Heathers*, *We Will Rock You* and more. A SUNY Oswego graduate with a dual degree in theatre and broadcasting, Danny is also an accomplished independent pro wrestler under the name Danny Dubstep. Thanks to cast, crew, Jeff, Kevin, Skeeter, Pretzel, and Gracie.



**Patrick Price** (Big Jule) has been an active problem in the theatre scene for a bunch of years. He is kept out of jail through the efforts of his family and friends. As well, the Playhouse has been his refuge and a second home for more than 5 years... and he's very excited to announce he will be starting an Improv series on February 8th at the Stonzek called *The Improv Experiment!*



**Daniel Ruiz** (Angie the Ox/ Mst. Ceremonies/ Ensemble) is thrilled to be returning to the Lake Worth Playhouse after an almost 20-year absence! He's come back home after spending that time away in New England, where he found an amazing husband and two wonderful pups to bring along. Others in his family have performed in *Guys And Dolls* in the past, and he's excited to finally have his turn!



**Chris Ombres** (Rusty Charlie/ Ensemble) is excited to be in his sixth show at the Lake Worth Playhouse. Some of his favorite previous roles in South Florida theatre include Linus in *You're a Good Man, Charlie Brown*, Galileo in *We Will Rock You*, Rooster in *Annie*, and Yonkers in *Gypsy*. He lives in Lake Worth Beach with his fiancée, Marci, and their dog, Rufus, only one of whom he met doing community theatre.





**Trenten Hazelton** (Society Max/ Ensemble) is making his first Lake Worth Playhouse debut! He's very excited to be working with such a lively and interesting group and making new friends. Trenten thanks his family and friends for their constant support. This is his start to making some BIG MOVES in film and show business, just wait and you'll see his masterpieces all coming together! For now, sit back and watch us play some dice! IG: Trent\_2.2



**Kalista Curbelo** (Hot Box Girl/ Mimi/ Dance Captain/ Ensemble) is thrilled to be making her Lake Worth Playhouse debut! A recent graduate of Point Park University with a BFA in dance. Endless love & thanks to her family, L&M, and her G&D cast. Couldn't do this without any of you! IG: @kalistacurbelo



**Megan Cires** (Hot Box Girl/ Ferguson/ Ensemble) is excited to be back at the LWPH for her 5th season performing on this historic stage! Most recent credits include *9 to 5 the Musical* (Judy Bernly), *Annie* (Grace Farrell), and *Turandot* (Palm Beach Opera Chorus). She spends her time off-stage as a veterinarian. Grammy...this one's for you.



**Katherine Lamb** (Hot Box Girl/ Vernon/ Ensemble): This is Katherine's 6th season at LWPH and she's excited to be back on the stage! In the past, Katherine has enjoyed being behind the scenes with costuming, stage managing, and crew for various productions; as well as on stage including *Young Frankenstein*, *Sister Act*, *Annie*, *Paint Your Wagon* (Elizabeth), *Gypsy* (Louise) and more! A HUGE thank you to her amazing husband for watching their one-year-old during the whole process. Love to W & O.



**Renae Rovnyak** (Hot Box Girl/ Allison/ Ensemble) is so excited to be a part of this show as a Hot Box Girl! She was previously in *Heathers* and *Sister Act* with the Lake Worth Playhouse and is so happy to be back. She would like to thank her fellow cast mates for making this one of her favorite shows she has ever been a part of.



**Thomas Hallett** (Joey Biltmore/ Ensemble): This is Tom's Lake Worth Playhouse debut and is thrilled to be working with this talented cast and marvelous crew. A Michigan native, Tom is excited to be joining the South Florida theatre scene. Enjoy the show! Go Army... Beat Navy!

# Under The Playhouse Lights



**Steven Toffler** (Tommy Dirty Shoes/ Ensemble): *Guys and Dolls* marks Steve's return to theatre after a 15+ year hiatus. Other theater credits include *The Music Man*, *She Loves Me*, *South Pacific*, *The King and I*, and many more. He is excited to be part of this cast and hopes this is the first of many more productions with LWPH. He wants to thank his fellow cast members and crew for this amazing opportunity and most importantly his wife, Lori, for putting up with his many crazy hobbies.



**Adam Carter** (Liver Lips Louie/ Ensemble): After taking a few months off from the stage, Adam is excited to be back performing at the Lake Worth Playhouse. His previous shows include *Paint Your Wagon*, *Oliver the Musical*, *Young Frankenstein*, *Sister Act*, and *Annie*. Adam would like to thank his family and friends for their support, and for everyone to enjoy the show.



**Diane Bacon Miles** (Martha/ Ensemble): This is Diane's fourth performance and first musical at the Lake Worth Playhouse. Thrilled to be involved in community theatre again after many years, when not performing she enjoys supporting other Playhouse productions by assisting with costuming, set painting, and ushering whenever she can.



**Seth Suchy** (Frankie Steps/ Ensemble) is very excited to be a part of the *Guys and Dolls* cast. His credits include *Narnia* (Father Christmas), *Peter Pan* (Smee), *Peter and the Starcatcher* (Ted), *9 to 5* (Josh Newstead), *The Addams Family* (Malcolm), and *Alice in Wonderland* (Cheshire Cat). Seth would like to give a special thanks to his cast, crew, marvelous director, stage manager, and his family for making this play happen for him.



*Special Thanks to Amanda Roy, Bad Hair Day Photography, for photographing the show.*





**Joanne DePrizio** (Director/ Choreographer) has been active in theatre for many years and is an accomplished Director, Choreographer, and Performer. She has worked professionally and non-professionally at many theatres but considers LWPH to be her “home base” and has been involved here for more than 35 years.

A few of her favorite accomplishments are *Joseph, 42nd Street, Crazy for You, Swing, Chicago, and Cabaret*. Favorite roles: Beatrice (*A View from the Bridge*), Jesse (*Nite Mother*), Roxie (*Chicago*), Dottie (*Good People*), Lottie (*My One and Only*). Joanne would like to send a special “Thank You” to Daniel and Stephanie for their unconditional support and trust in her to bring this show to life. It takes a village, and she has had the best by her side: Ed, Vicki, Lily, Elizabeth, Jill, Dean, Jimmy, and her very talented cast and crew. Thank you all for your patience and hard work and commitment to her and the show. Break legs! Let’s shoot crap!



**Ed Kolcz** (Musical Director): A Florida resident since 1975, Ed has been a Music Director and Pit Musician for numerous professional, community, and school theatre programs throughout S. Florida including the award-sweeping production of *Young Frankenstein* here at the Lake Worth Playhouse. Ed is also an accomplished accompanist/coach, church organist/choir director for over 30 years, and the keyboardist/band manager of his wedding/corporate band “Groove Line”. As a former I.T. specialist and due to the pandemic, Ed has also gained numerous skills in live-streaming theatre productions using a variety of computer software.

Ed is honored, grateful, and thrilled to be working with the talented cast and crew of *Guys and Dolls* and looks forward to many more in the future at his favorite theatre....the Lake Worth Playhouse.

## Behind The Playhouse Curtains



**Victoria Goulet** (Stage Manager) has been with the Lake Worth Playhouse for approximately 30 years, including various other theatres, as an actor, stage manager, assistant director, and techie. She was recently seen on the Stonzek Stage in *Rosencrantz and Guildenstern are Dead*. She retired from Palm Beach County Engineering and Public Works after 33 years but claims that theatre and music are her passion. She'd like to thank Wendy Haley for all her unconditional support. She'd also like to thank everyone involved in this show for all their hard work. Break-A-Leg all... There's No Business Like Show Business!



**Lillian Roy** (Stage Manager) has been connected with the theatre since the age of seven and joined the summer camp at the Lake Worth Playhouse. She was also in shows on the Main Stage, such as *Oliver*. Lately, she has been seen working backstage in various shows including *Heathers*, *Annie*, and *Wizard of Oz*.



Kid Auditions: February 11 & 12 from 12-4pm

Adult Auditions: February 13 & 15 at 7pm

Visit [www.lakeworthplayhouse.org/audition](http://www.lakeworthplayhouse.org/audition)

We always have opportunities for volunteer credit!

Email Artistic Director Daniel Eilola at

[daniel@lakeworthplayhouse.org](mailto:daniel@lakeworthplayhouse.org)



# ***Raise the Roof: Lake Worth Playhouse Donation Drive***

Dear Valued Patron:

The Lake Worth Playhouse prides itself on presenting high-quality, affordable live theater to its community. Since 1974, we have resided in the former Oakley Theater, which first opened its doors in 1924. While there are many advantages to our home being in a historic building, the maintenance and upkeep of the theater is an ongoing challenge that we have to face. Currently, our entire roof is badly in need of replacement and we need your help!

As a registered 501(C)3 non-profit organization, the Lake Worth Playhouse relies on donations to assist us in attaining our goals. Your donation will make a direct impact. We ask that you please consider making a tax-deductible donation.

Please contact Executive Director Stephanie Smith, [ssmith@lakeworthplayhouse.org](mailto:ssmith@lakeworthplayhouse.org) for further details on how to donate. Or fill out the form below and turn it into the Box Office.

Thank You,  
The Lake Worth Playhouse

FLORIDA DEPARTMENT OF AGRICULTURE & CONSUMER AFFAIRS REGISTRATION # - CH9675  
A COPY OF THE OFFICIAL REGISTRATION AND FINANCIAL INFORMATION MAY BE OBTAINED FROM  
THE DIVISION OF CONSUMER SERVICES BY CALLING TOLL-FREE (800-435-7352) WITHIN THE STATE.  
REGISTRATION DOES NOT IMPLY ENDORSEMENT, APPROVAL, OR RECOMMENDATION BY THE STATE.

## **THANK YOU FOR YOUR SUPPORT OF LWPH**

Yes, I would like to support the Lake Worth Playhouse

with my gift of \$\_\_\_\_\_

Please print clearly:

Name: \_\_\_\_\_

Address: \_\_\_\_\_

City/State/Zip: \_\_\_\_\_

Phone: \_\_\_\_\_

☐ Check ☐ Credit Card (one time) ☐ or call (561) 586 - 6410

Card Number: \_\_\_\_\_

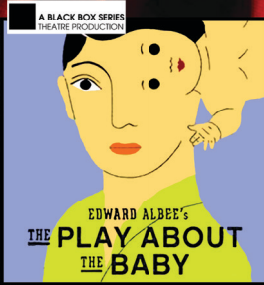
Security Code \_\_\_\_\_ Expiration Date: \_\_\_\_/\_\_\_\_/\_\_\_\_





# OUR 70<sup>TH</sup> SEASON

## Coming Up...

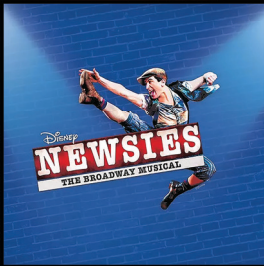


### THE PLAY ABOUT THE BABY January 27 - February 5, 2023

Equally hilarious and frightening, this play is a darkly comic dramatic fable by Pulitzer and Tony-winning playwright Edward Albee. A young couple, madly in love with each other and their child, find their picture-perfect life interrupted when an older couple steals their baby.

### DIAL "M" FOR MURDER March 3 - 12, 2023

When American writer Mark Halliday visits the very married Margot Wendice in London, he unknowingly sets off a chain of blackmail and murder. Don't miss this cat-and-mouse waiting game with twists and thrills!

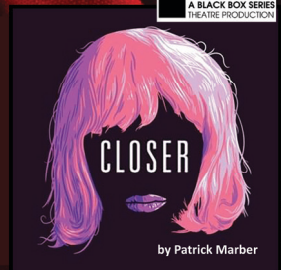


### DISNEY'S NEWSIES April 15 - 30, 2023

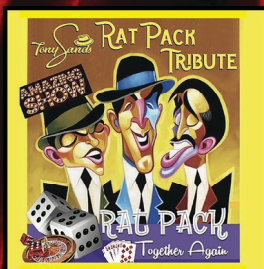
Set in turn-of-the-century NYC, follow the rousing tale of Jack Kelly, leader of a band of teenaged "newsies". When titans of publishing raise distribution prices at the newsboys' expense, Jack rallies newsies from across the city to strike against the unfair conditions and fight for what's right!

### CLOSER May 5 - 14, 2023

Winner of 1997 Olivier award for Best New Play and Tony Award winner, Closer is about four lives that intertwine over the course of four and a half years in a stinging look at modern love and betrayal.



# LIMITED ENGAGEMENTS



**January 25, 2023**

'LAUGH OUT LOUD' comedy, marvelous melodies, & TERRIFIC TAP! Three amazing talents that will take you back to when seeing Frank, Dean, & Sammy in Vegas was the ultimate event in show biz!

**February 8, 2023**

Come one and all as some of the finest comedians, improvisers, and general loons do their best to win your favor. Pick a favorite, shout your loudest, and let's see who will win the coveted title of Best!



**February 12, 2023**

Join the Women of Note for this musical celebration of love this Valentine's Weekend! The performance will feature the chorus, chorus quartets and special guest quartet, Throwback, singing a cappella love song in barbershop style.

**March 8, 2023**

Sands takes you from the silver screen of Hollywood, to Frank's Main Event comeback. Sinatra's best loved songs are performed in this sensational storytelling musical.



**March 18, 2023**

This annual Drag Show Fundraiser is back by popular demand for ITS SIXTEENTH consecutive year! A high-energy drag concert that features a cast of dazzling drag divas. Ages 18+ Only





VOLUNTEERS ARE ALWAYS WELCOME AND  
THE LIFEblood OF OUR ORGANISATION

Complete your school or community service hours  
here at the playhouse!

- Backstage-  
- Lighting-  
- Sound-  
- Ushers-

## MARIO'S LAKE AVE

*Directly east of Lake Worth Playhouse on the south side of the street*



"Perfect Pair"

singing Broadway Tunes & Standards  
on Saturday night starting at 8:30pm

### Early Bird Special \$22

4pm-6pm Tuesday-Saturday  
1pm-6pm on Sunday (seated by 5:30p)

Your Choice of Entree:

With Salad or Soup & Coffee or Tea

Cavatelli with Meatball or Sausage • Penne alla Vodka  
Eggplant Parmigiana • Eggplant Rollatini • Cheese Cannelloni  
Lasagna • Chicken Marsala • Chicken Parmigiana • Veal Parmigiana  
Veal Francaise • Shrimp Scampi • Snapper Francaise  
Snapper with Sundried Tomatoes & Artichokes • Grilled Salmon

No substitutions please.

### 561-582-3013

707 LAKE AVE., LAKE WORTH BEACH  
RESERVATIONS RECOMMENDED

*Don't worry about parking.... There is valet!*

*Closed Mondays. Open at 4pm. Sundays at 1pm. Take-out available.*



Compass' mission is to engage, empower and  
enrich the lives of lesbian, gay, bisexual,  
transgender and queer (LGBTQ) people and  
those impacted by HIV and AIDS.



**COMPASS**  
COMMUNITY CENTER

Compass Community Center  
201 N Dixie Hwy  
Lake Worth Beach, FL 33460  
CompassGLCC.com | 561-533-9699



# LAKE WORTH'S FAVORITE GATHERING SPOT

*(But don't tell anyone...  
the locals might get mad)*

- DAILY SPECIALS
- OPEN AIR DINING

632 LAKE AVENUE  
LAKE WORTH  
588-5208



EST. 1999

CRABS  
CLAMS  
OYSTERS

FRESH FISH • PRIME RIB  
BABY BACK RIBS

Corner of Lake Ave and K Street

JOIN US  
BEFORE OR  
AFTER THE SHOW

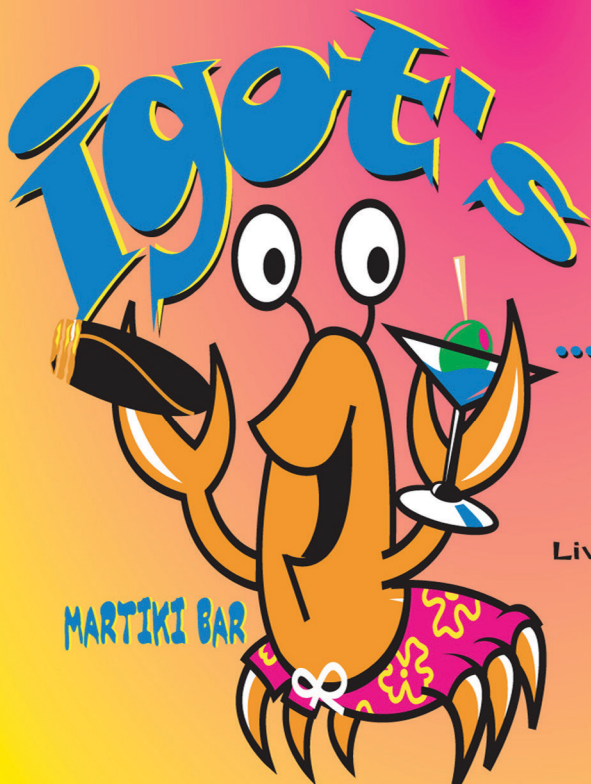
...TO HAVE A DRINK

LOCATED NEXT DOOR  
TO DAVE'S

Live Entertainment Thur - Sun

702 LAKE AVENUE  
LAKE WORTH  
582-IGOT

[www.daveslastresort.com](http://www.daveslastresort.com)





*Proudly  
Supporting  
the Arts*

**LIVE & LOCAL  
IN PALM BEACH COUNTY  
[LEGENDSRADIO.COM](http://LEGENDSRADIO.COM)**



PROUD SPONSOR OF THE LAKE WORTH PLAYHOUSE

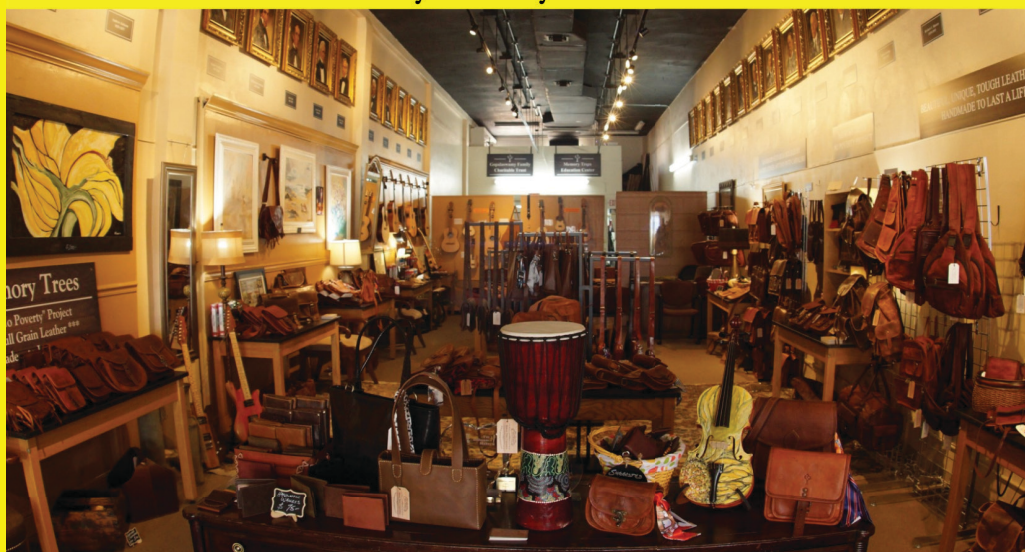
2022 - 23 SEASON

# SUNNY 107.9 FM

THE GREATEST HITS OF THE  
70'S, 80'S, & 90'S

[WWW.SUNNY1079.COM](http://WWW.SUNNY1079.COM)

You're Only One Block Away From  
**LEATHER, ART & GUITARS**  
by Memory Trees



Charity Gift Shop | Museum | Gallery | Exhibition

Unique Art | Handmade Guitars & Ukuleles | Handmade Leathers

810 Lake Ave, Lake Worth | 561.290.8833 | [shop@memorytrees.co](mailto:shop@memorytrees.co) | [www.memorytrees.co](http://www.memorytrees.co)

# Lake Worth Playhouse Donors

20,000+

Palm Beach County  
Cultural Council  
Prime Time Palm Beach  
County  
Florida Division of  
Cultural Affairs  
Anonymous  
Anonymous

10,000+

Anonymous  
William H. Donner  
Foundation, Inc

5,000+

Anonymous  
Anonymous  
Goldman Sachs & Co.

1,000+

Bank of America  
Matching Gifts  
Geberth, John  
Ken Mosher  
Oppenheim, Gary (c)  
Peel, Michele Kurucz  
Richard & Charlene  
Raphael  
In Memory of Betty &  
Charlie Hall  
Schneider, Carran  
Swick, Richard  
Trish Weaver  
Weidemeyer Family Fund  
In Honor of: Mimi May &  
Tom Weidemeyer Jr  
Wilfong, Jennifer

500+

Bradley, Liz  
Fidelity Charitable  
Longo, Hillary  
McPoland, Patric  
Opotowsky, Stuart  
Sedlik, Lawrence

250+

Bloeth, Michael  
Cafarelli, Phyllis

Elgin, Marcia  
Furman, Ira  
Hershey, Carol  
Kelly Williams  
Kenneth J Vianale  
Lennon, Berenice  
Lozier, Karl  
Neighborhood Assoc.  
President's Council  
Robert D'arinzio LLC  
Swick, Richard

100+

Adler-Fagin, Doris  
Alosso, Michael  
Becker, Sarah  
Coolican, Shauna (c)  
Corso, Vincent  
Davidson, Susan  
Debra Marcucci  
Diaz, Susy  
Edwards, Larry  
Engel, Ellen  
Ermolovich, Elaine  
Farley, Matthew  
Farrell, Joan  
Feldkamp, William  
Fleisher, David  
Foley,Carolynn  
Franke, Helen  
Gershbein, Andrea  
Anonymous  
Highland, Patricia  
Leas, Rodman  
Linda Jones  
Llorens, Frederic  
Madineh Sarvestani  
Mid Winter Adult Piano  
Retreat  
Nicole Laing (c)  
Nicole Polichano  
Paul Rosen  
Petrovsky, Vince  
Rankin, Keith  
Reinoso, Jose  
Robeson, Bonnie  
Rodkey, Joseph  
Rothchild, Jane  
Roy, Amanda

Schmeyer, Jon  
Schwab, Samuel  
Seltzer, Gail  
Smith, Laura  
Swick, Richard  
Swiercz, Roman  
The Boston Art Club  
Valentine, Ralph  
Wisinski, William  
Worley, Steve

OTHER

Becker, Sarah  
Brian Harms  
Gersh, Naomi  
Katz, Seymour  
Lorina, Antoinetta  
Lorina, Antoinetta  
Nahmmacher, Marion  
Nicole Laing (c)  
Paradise, Gary  
Parsons, Claire  
Robeson, Bonnie  
Roseann Ogonowski  
Ross, Stacey  
Sohn, Lois  
Swinkels, Henny  
Walsh, Kathleen  
Walsh, Kathleen  
Walton, Diana  
Zalmanovich, Harriet





Box Office: Monday - Saturday 10am-4pm | (561) 586-6410  
Administrative Office: (561) 586-6169

Audience Feedback: We want to hear from you! Send your ideas, comments, feedback or suggestions to: [ssmith@lakeworthplayhouse.org](mailto:ssmith@lakeworthplayhouse.org).

Special Needs: The Playhouse is equipped with listening headsets for hearing impaired patrons and special seating for wheelchair patrons.

Ask at the box office.

Group Tickets: 561-586-6169x214 or [judith@lakeworthplayhouse.org](mailto:judith@lakeworthplayhouse.org)

Facility Use: [ssmith@lakeworthplayhouse.org](mailto:ssmith@lakeworthplayhouse.org)

Sponsorship: 561-586-6169x210 or [daniel@lakeworthplayhouse.org](mailto:daniel@lakeworthplayhouse.org)

Advertising: 561-586-6169x216 or [katherine@lakeworthplayhouse.org](mailto:katherine@lakeworthplayhouse.org)

Volunteer: [ssmith@lakeworthplayhouse.org](mailto:ssmith@lakeworthplayhouse.org)

### Lake Worth Playhouse Staff

Executive Director.....	Stephanie Smith
Artistic Director.....	Daniel Eilola
Education Director.....	Shoshana Davidowitz
Marketing Director.....	Katherine Lamb Chico
Marketing Intern.....	Maya Suchy
Technical Director.....	James R. Cartee
Box Office & Group Sales Manager.....	Judith Johnson
Film Director & Stonzek Theatre Manager.....	Charles Birnbaum
Box Office Staff .....	Michele Nemo, Dianne Beaton, ..... Jon Hinostrroza, Emma Sue Harris, Alveiro Machado, Saxz Stevens,
Shop Foreman .....	Nelson Stone
Master Carpenter.....	M.A. Knoke

### Lake Worth Playhouse Board

President.....	Michael McKeich
Vice President.....	Paul Schild
Secretary .....	Teresa Miller
Treasurer.....	Gary Zayac
Director.....	Hillary Longo

Playhouse Counsel..... Anthony Aragona

*A copy of the official registration and financial information may be obtained from the division of consumer services by calling toll-free (800-435-7352) within the state. Registration does not imply endorsement, approval or recommendation by the state.*



Find us on  
**Facebook**

[facebook.com/lwplayhouse](https://facebook.com/lwplayhouse)




[@LWPlayhouse](https://www.instagram.com/LWPlayhouse)



[@LWPlayhouse](https://twitter.com/LWPlayhouse)



## FRESH • AUTHENTIC • ELEGANT This is how Italians eat.

"This spectacular Italian restaurant epitomizes the ultimate romantic dining experience. Discover the best of the romantic island of Capri recreated at Lake Worth's premier Italian restaurant." Braman Porsche 

"If you want 'versatilita Italiana,' you'll find it here. The ambience, quality and location make this an ideal spot for a romantic meal or small family gathering." The Palm Beach Post

"I like to visit Lake Worth to dine — one of my favorites is Rustico Italiano." Carleton Varney, Dorothy Draper & Co.



since 2000

## RUSTICO ITALIANO

701 Lucerne Ave • Lake Worth, FL

561.547.2782

[rusticoitaliano.com](http://rusticoitaliano.com)